

## ATP6V1C2 Antibody

Catalog No: #35137

Package Size: #35137-1 50ul #35137-2 100ul

Orders: [order@signalwayantibody.com](mailto:order@signalwayantibody.com)Support: [tech@signalwayantibody.com](mailto:tech@signalwayantibody.com)

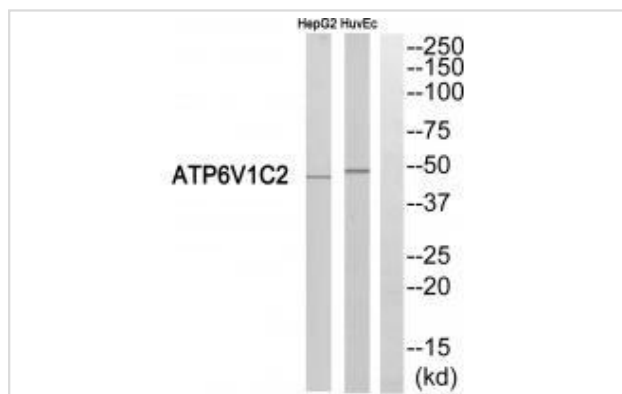
## Description

Product Name	ATP6V1C2 Antibody
Host Species	Rabbit
Clonality	Polyclonal
Purification	The antibody was affinity-purified from rabbit antiserum by affinity-chromatography using epitope-specific immunogen.
Applications	WB
Species Reactivity	Hu
Specificity	The antibody detects endogenous levels of total ATP6V1C2 protein.
Immunogen Type	Peptide
Immunogen Description	Synthesized peptide derived from internal of human ATP6V1C2.
Target Name	ATP6V1C2
Other Names	Vacuolar proton pump subunit C 2; V-ATPase subunit C 2; ATP6V1C2;
Accession No.	Swiss-Prot: Q8NEY4NCBI Gene ID: 245973
Uniprot	Q8NEY4
GeneID	245973;
SDS-PAGE MW	49kd
Concentration	1.0mg/ml
Formulation	Rabbit IgG in phosphate buffered saline (without Mg <sup>2+</sup> and Ca <sup>2+</sup> ), pH 7.4, 150mM NaCl, 0.02% sodium azide and 50% glycerol.
Storage	Store at -20°C

## Application Details

Western blotting: 1:500~1:3000

## Images



Western blot analysis of extracts from HepG2 cells and HUVEC cells, using ATP6V1C2 antibody #35137.

## Background

---

Subunit of the peripheral V1 complex of vacuolar ATPase. Subunit C is necessary for the assembly of the catalytic sector of the enzyme and is likely to have a specific function in its catalytic activity. V-ATPase is responsible for acidifying a variety of intracellular compartments in eukaryotic cells.

Smith A.N., Gene 297:169-177(2002).

Hillier L.W., Nature 434:724-731(2005).

The MGC Project Team, Genome Res. 14:2121-2127(2004).

---

Note: This product is for in vitro research use only