

NSF Antibody

Catalog No: #35142

Package Size: #35142-1 50ul #35142-2 100ul

Orders: order@signalwayantibody.comSupport: tech@signalwayantibody.com

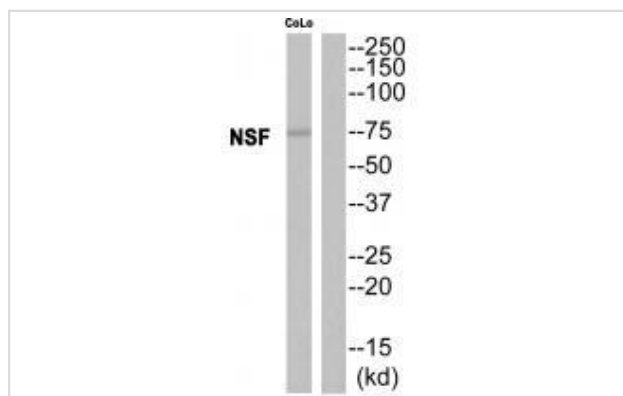
Description

Product Name	NSF Antibody
Host Species	Rabbit
Clonality	Polyclonal
Purification	The antibody was affinity-purified from rabbit antiserum by affinity-chromatography using epitope-specific immunogen.
Applications	WB
Species Reactivity	Hu Ms Rt
Specificity	The antibody detects endogenous levels of total NSF protein.
Immunogen Type	Peptide
Immunogen Description	Synthesized peptide derived from internal of human NSF.
Target Name	NSF
Other Names	Vesicle-fusing ATPase; EC=3.6.4.6; N-ethylmaleimide-sensitive fusion protein; Short name=NEM-sensitive fusion protein; Vesicular-fusion protein NSF
Accession No.	Swiss-Prot: P46459NCBI Gene ID: 4905
Uniprot	P46459
GeneID	4905;
SDS-PAGE MW	75kd
Concentration	1.0mg/ml
Formulation	Rabbit IgG in phosphate buffered saline (without Mg ²⁺ and Ca ²⁺), pH 7.4, 150mM NaCl, 0.02% sodium azide and 50% glycerol.
Storage	Store at -20°C

Application Details

Western blotting: 1:500~1:3000

Images



Western blot analysis of extracts from CoLo cells, using NSF antibody #35142.

Background

Required for vesicle-mediated transport. Catalyzes the fusion of transport vesicles within the Golgi cisternae. Is also required for transport from the endoplasmic reticulum to the Golgi stack. Seems to function as a fusion protein required for the delivery of cargo proteins to all compartments of the Golgi stack independent of vesicle origin. Interaction with AMPAR subunit GRIA2 leads to influence GRIA2 membrane cycling By similarity.

Ota T., Nat. Genet. 36:40-45(2004) [PubMed: 14702039].

Zody M.C., Nature 440:1045-1049(2006) [PubMed: 16625196] [Abstract].

Note: This product is for in vitro research use only