

WIPF1 Antibody

Catalog No: #35146

Package Size: #35146-1 50ul #35146-2 100ul

Orders: order@signalwayantibody.comSupport: tech@signalwayantibody.com

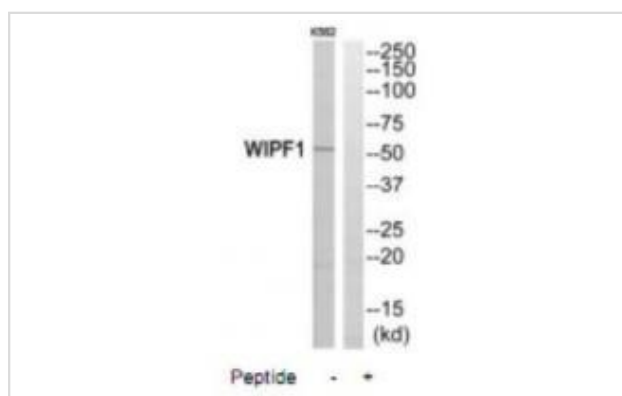
Description

Product Name	WIPF1 Antibody
Host Species	Rabbit
Clonality	Polyclonal
Purification	The antibody was affinity-purified from rabbit antiserum by affinity-chromatography using epitope-specific immunogen.
Applications	WB
Species Reactivity	Hu
Specificity	The antibody detects endogenous levels of total WIPF1 protein.
Immunogen Type	Peptide
Immunogen Description	Synthesized peptide derived from C-terminal of human WIPF1.
Target Name	WIPF1
Other Names	WAS/WASL-interacting protein family member 1; Wiskott-Aldrich syndrome protein-interacting protein; WASP-interacting protein; PRPL-2 protein; WIPF1
Accession No.	Swiss-Prot: O43516NCBI Gene ID: 7456
Uniprot	O43516
GeneID	7456;
SDS-PAGE MW	52kd
Concentration	1.0mg/ml
Formulation	Rabbit IgG in phosphate buffered saline (without Mg ²⁺ and Ca ²⁺), pH 7.4, 150mM NaCl, 0.02% sodium azide and 50% glycerol.
Storage	Store at -20°C

Application Details

Western blotting: 1:500~1:3000

Images



Western blot analysis of extracts from K562 cells, using WIPF1 antibody #35146.

Background

Plays a role in the reorganization of the actin cytoskeleton. Contributes with NCK1 and GRB2 in the recruitment and activation of WASL. May participate in regulating the subcellular localization of WASL, resulting in the disassembly of stress fibers in favor of filopodia formation. Plays a role in the formation of cell ruffles By similarity. Plays an important role in the intracellular motility of vaccinia virus by functioning as an adapter for recruiting WASL to vaccinia virus.

Ramesh N., Proc. Natl. Acad. Sci. U.S.A. 94:14671-14676(1997).

Kreideweiss S., Submitted (JAN-1998) to the EMBL/GenBank/DDBJ databases.

Bechtel S., BMC Genomics 8:399-399(2007).

Note: This product is for in vitro research use only