

ZC11A Antibody

Catalog No: #35152

Package Size: #35152-1 50ul #35152-2 100ul

Orders: order@signalwayantibody.comSupport: tech@signalwayantibody.com

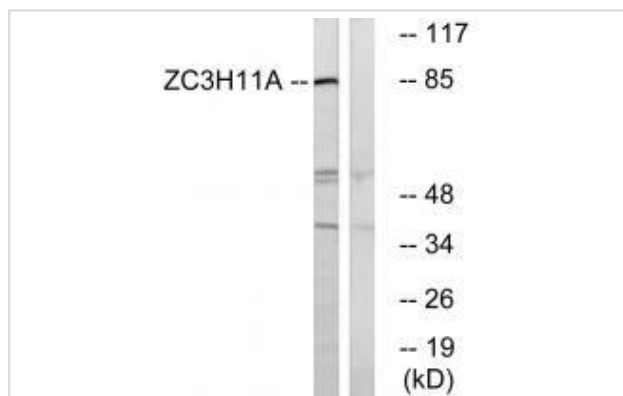
Description

Product Name	ZC11A Antibody
Host Species	Rabbit
Clonality	Polyclonal
Purification	The antibody was affinity-purified from rabbit antiserum by affinity-chromatography using epitope-specific immunogen.
Applications	WB
Species Reactivity	Hu Ms
Specificity	The antibody detects endogenous levels of total ZC11A protein.
Immunogen Type	Peptide
Immunogen Description	Synthesized peptide derived from internal of human ZC11A.
Target Name	ZC11A
Other Names	ZC3H11A; ZC11A;
Accession No.	Swiss-Prot: O75152NCBI Gene ID: 9877
Uniprot	O75152
GeneID	9877;
SDS-PAGE MW	85kd
Concentration	1.0mg/ml
Formulation	Rabbit IgG in phosphate buffered saline (without Mg ²⁺ and Ca ²⁺), pH 7.4, 150mM NaCl, 0.02% sodium azide and 50% glycerol.
Storage	Store at -20°C

Application Details

Western blotting: 1:500~1:3000

Images



Western blot analysis of extracts from COS cells, using ZC11A antibody #35152.

Background

Involved in nuclear mRNA export; probably mediated by association with the TREX complex.

Ishikawa K., DNA Res. 5:169-176(1998).

Ohara O., Submitted (JAN-2004) to the EMBL/GenBank/DDBJ databases.

The German cDNA consortium; Submitted (SEP-2004) to the EMBL/GenBank/DDBJ databases.

Note: This product is for in vitro research use only