

SLC39A7 Antibody

Catalog No: #35162

Package Size: #35162-1 50ul #35162-2 100ul

Orders: order@signalwayantibody.comSupport: tech@signalwayantibody.com

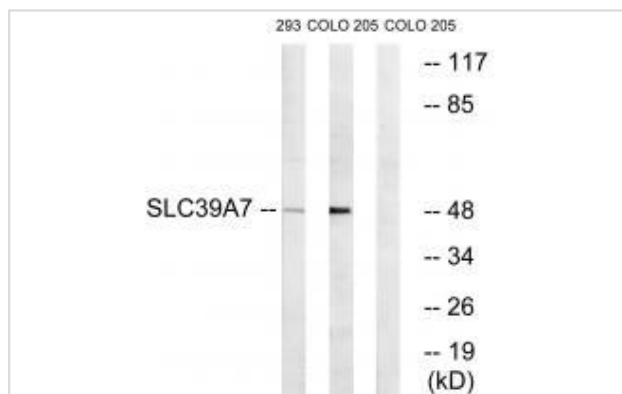
Description

Product Name	SLC39A7 Antibody
Host Species	Rabbit
Clonality	Polyclonal
Purification	The antibody was affinity-purified from rabbit antiserum by affinity-chromatography using epitope-specific immunogen.
Applications	WB
Species Reactivity	Hu Ms
Specificity	The antibody detects endogenous levels of total SLC39A7 protein.
Immunogen Type	Peptide
Immunogen Description	Synthesized peptide derived from internal of human SLC39A7.
Target Name	SLC39A7
Other Names	H2-KE4; histidine-rich membrane protein Ke4; HKE4; HLA class II region expressed gene KE4; KE4
Accession No.	Swiss-Prot: Q92504NCBI Gene ID: 7922
Uniprot	Q92504
GeneID	7922;
SDS-PAGE MW	50kd
Concentration	1.0mg/ml
Formulation	Rabbit IgG in phosphate buffered saline (without Mg ²⁺ and Ca ²⁺), pH 7.4, 150mM NaCl, 0.02% sodium azide and 50% glycerol.
Storage	Store at -20°C

Application Details

Western blotting: 1:500~1:3000

Images



Western blot analysis of extracts from 293 cells and COLO cells, using SLC39A7 antibody #35162.

Background

Zinc transporter, that transports Zn²⁺ from the endoplasmic reticulum/Golgi apparatus to the cytosol. Transport is stimulated by growth factors, such as EGF, and Ca²⁺, as well as by exogenous Zn²⁺.

Ando A., Genomics 35:600-602(1996).

Vergara A., Submitted (DEC-1998) to the EMBL/GenBank/DDBJ databases.

Mungall A.J., Nature 425:805-811(2003).

Note: This product is for in vitro research use only