

ZADH2 Antibody

Catalog No: #35165



Package Size: #35165-1 50ul #35165-2 100ul

Orders: order@signalwayantibody.com
Support: tech@signalwayantibody.com

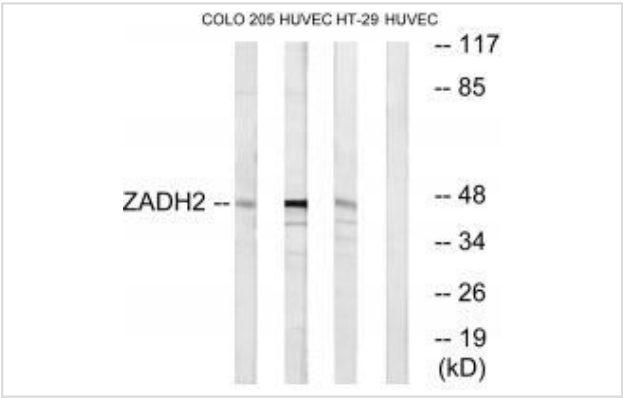
Description

| | |
|-----------------------|---|
| Product Name | ZADH2 Antibody |
| Host Species | Rabbit |
| Clonality | Polyclonal |
| Purification | The antibody was affinity-purified from rabbit antiserum by affinity-chromatography using epitope-specific immunogen. |
| Applications | WB |
| Species Reactivity | Hu Ms |
| Specificity | The antibody detects endogenous levels of total ZADH2 protein. |
| Immunogen Type | Peptide |
| Immunogen Description | Synthesized peptide derived from internal of human ZADH2. |
| Target Name | ZADH2 |
| Other Names | EC 1.-.-.-; zinc-binding alcohol dehydrogenase domain-containing 2; |
| Accession No. | Swiss-Prot: Q8N4Q0NCBI Gene ID: 284273 |
| Uniprot | Q8N4Q0 |
| GeneID | 284273; |
| SDS-PAGE MW | 45kd |
| Concentration | 1.0mg/ml |
| Formulation | Rabbit IgG in phosphate buffered saline (without Mg2+ and Ca2+), pH 7.4, 150mM NaCl, 0.02% sodium azide and 50% glycerol. |
| Storage | Store at -20°C |

Application Details

Western blotting: 1:500~1:3000

Images



Western blot analysis of extracts from COLO cells, HUVEC cells and HT-29 cells, using ZADH2 antibody #35165.

Background

Belongs to the zinc-containing alcohol dehydrogenase family. Quinone oxidoreductase subfamily.

The MGC Project Team; The MGC Project Team;

Bunkoczi G., Submitted (SEP-2005) to the PDB data bank.

Note: This product is for in vitro research use only