

## PTRF Antibody

Catalog No: #35182

Package Size: #35182-1 50ul #35182-2 100ul

Orders: order@signalwayantibody.com

Support: tech@signalwayantibody.com

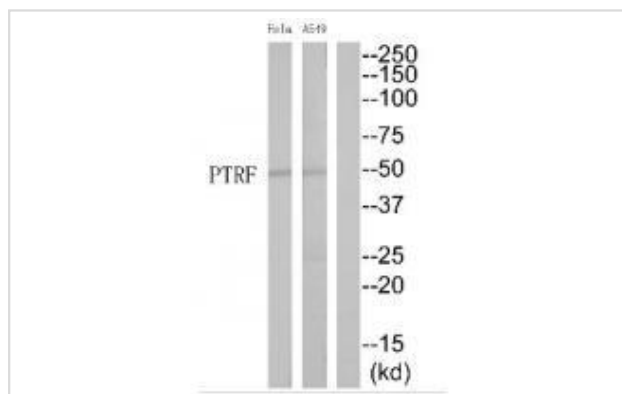
## Description

Product Name	PTRF Antibody
Host Species	Rabbit
Clonality	Polyclonal
Purification	The antibody was affinity-purified from rabbit antiserum by affinity-chromatography using epitope-specific immunogen.
Applications	WB
Species Reactivity	Hu Ms Rt
Specificity	The antibody detects endogenous levels of total PTRF protein.
Immunogen Type	Peptide
Immunogen Description	Synthesized peptide derived from Internal of human PTRF.
Target Name	PTRF
Other Names	CAVIN; Cavin-1; CGL4; FKSG13; FLJ90031
Accession No.	Swiss-Prot: Q6NZI2NCBI Gene ID: 284119
Uniprot	Q6NZI2
GeneID	284119;
SDS-PAGE MW	43kd
Concentration	1.0mg/ml
Formulation	Rabbit IgG in phosphate buffered saline (without Mg <sup>2+</sup> and Ca <sup>2+</sup> ), pH 7.4, 150mM NaCl, 0.02% sodium azide and 50% glycerol.
Storage	Store at -20°C

## Application Details

Western blotting: 1:500~1:3000

## Images



Western blot analysis of extracts from HeLa cells and A549 cells, using PTRF antibody #35182.

## Background

---

Plays an important role in caveolae formation and organization. Required for the sequestration of mobile caveolin into immobile caveolae. Termination of transcription by RNA polymerase I involves pausing of transcription by TTF1, and the dissociation of the transcription complex, releasing pre-rRNA and RNA polymerase I from the template. PTRF is required for dissociation of the ternary transcription complex.

Wang Y.-G., Submitted (OCT-2000) to the EMBL/GenBank/DDBJ databases.

Jansa P., EMBO J. 17:2855-2864(1998).

Aboulaich N., Biochem. J. 383:237-248(2004).

---

Note: This product is for in vitro research use only