

TBPL2 Antibody

Catalog No: #35184

Package Size: #35184-1 50ul #35184-2 100ul

Orders: order@signalwayantibody.comSupport: tech@signalwayantibody.com

Description

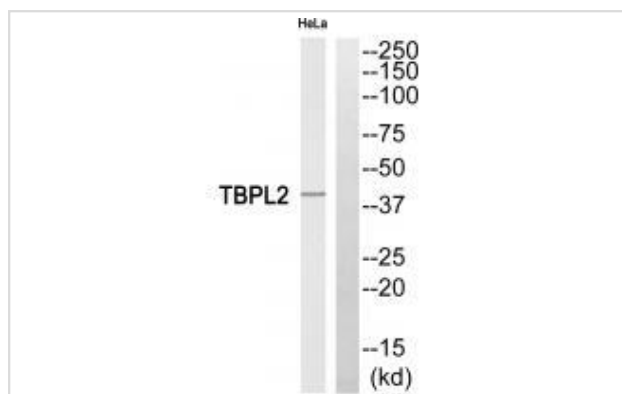
Product Name	TBPL2 Antibody
Host Species	Rabbit
Clonality	Polyclonal
Purification	The antibody was affinity-purified from rabbit antiserum by affinity-chromatography using epitope-specific immunogen.
Applications	WB IHC
Species Reactivity	Hu
Specificity	The antibody detects endogenous levels of total TBPL2 protein.
Immunogen Type	Peptide
Immunogen Description	Synthesized peptide derived from internal of human TBPL2.
Target Name	TBPL2
Other Names	TATA box-binding protein-like protein 2; TBP-like protein 2; TATA box-binding protein-related factor 3; TBP-related factor 3; TBPL2
Accession No.	Swiss-Prot: Q6SJ96NCBI Gene ID: 387332
Uniprot	Q6SJ96
GeneID	387332;
SDS-PAGE MW	41kd
Concentration	1.0mg/ml
Formulation	Rabbit IgG in phosphate buffered saline (without Mg ²⁺ and Ca ²⁺), pH 7.4, 150mM NaCl, 0.02% sodium azide and 50% glycerol.
Storage	Store at -20°C

Application Details

Western blotting: 1:500~1:3000

Immunohistochemistry: 1:50~1:100

Images



Western blot analysis of extracts from HeLa cells, using TBPL2 antibody #35184.

Immunohistochemistry analysis of paraffin-embedded human lung carcinoma tissue, using TBPL2 antibody #35184.



Background

Transcription factor required in complex with TAF3 for the differentiation of myoblasts into myocytes. The complex replaces TFIID at specific promoters at an early stage in the differentiation process By similarity. UniProtKB Q6SJ95

Persengiev S.P., Proc. Natl. Acad. Sci. U.S.A. 100:14887-14891(2003).

Di Pietro C., DNA Cell Biol. 26:369-385(2007).

The MGC Project Team, Genome Res. 14:2121-2127(2004).

Note: This product is for in vitro research use only