

CREB3L2 Antibody

Catalog No: #35185

Package Size: #35185-1 50ul #35185-2 100ul

Orders: order@signalwayantibody.com

Support: tech@signalwayantibody.com

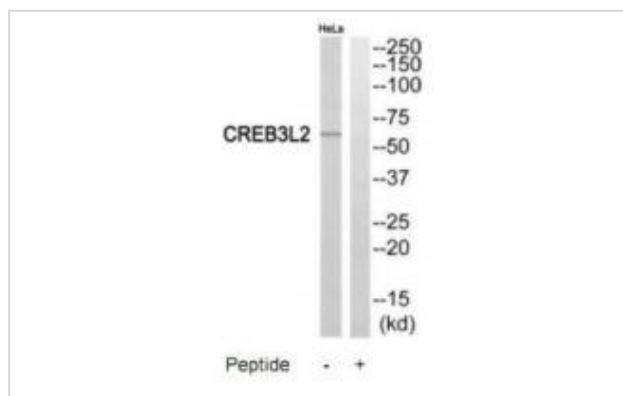
Description

Product Name	CREB3L2 Antibody
Host Species	Rabbit
Clonality	Polyclonal
Purification	The antibody was affinity-purified from rabbit antiserum by affinity-chromatography using epitope-specific immunogen.
Applications	WB
Species Reactivity	Hu
Specificity	The antibody detects endogenous levels of total CREB3L2 protein.
Immunogen Type	Peptide
Immunogen Description	Synthesized peptide derived from internal of human CREB3L2.
Target Name	CREB3L2
Other Names	cAMP-responsive element-binding protein 3-like protein 2; BBF2 human homolog on chromosome 7; Processed cAMP-responsive element-binding protein 3-like protein 2; CREB3L2; BBF2H7
Accession No.	Swiss-Prot: Q70SY1NCBI Gene ID: 64764
Uniprot	Q70SY1
GeneID	64764;
SDS-PAGE MW	58kd
Concentration	1.0mg/ml
Formulation	Rabbit IgG in phosphate buffered saline (without Mg ²⁺ and Ca ²⁺), pH 7.4, 150mM NaCl, 0.02% sodium azide and 50% glycerol.
Storage	Store at -20°C

Application Details

Western blotting: 1:500~1:3000

Images



Western blot analysis of extracts from HeLa cells, using CREB3L2 antibody #35185.

Background

Transcriptional activator which is processed and activated during endoplasmic reticulum stress late phase. Binds to the cAMP response element (CRE) and activates transcription through CRE. Regulates the transcription of unfolded protein response target genes, preventing accumulation of unfolded proteins in damaged neurons. Also regulates the expression of SEC23A, accelerating protein trafficking from the ER to the Golgi thereby playing a key role in chondrocyte differentiation and formation of epiphyseal cartilage By similarity.

Storlazzi C.T., Hum. Mol. Genet. 12:2349-2358(2003).

Ota T., Nat. Genet. 36:40-45(2004).

Scherer S.W., Science 300:767-772(2003).

Note: This product is for in vitro research use only