

CDX2 Antibody

Catalog No: #35198

Package Size: #35198-1 50ul #35198-2 100ul

Orders: order@signalwayantibody.comSupport: tech@signalwayantibody.com

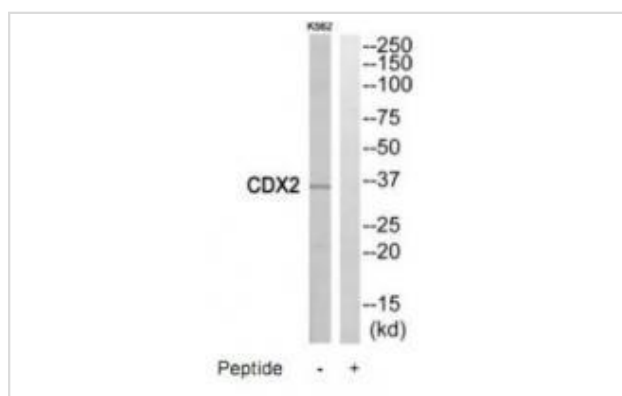
Description

Product Name	CDX2 Antibody
Host Species	Rabbit
Clonality	Polyclonal
Purification	The antibody was affinity-purified from rabbit antiserum by affinity-chromatography using epitope-specific immunogen.
Applications	WB
Species Reactivity	Hu
Specificity	The antibody detects endogenous levels of total CDX2 protein.
Immunogen Type	Peptide
Immunogen Description	Synthesized peptide derived from internal of human CDX2.
Target Name	CDX2
Other Names	caudal type homeo box transcription factor 2; Caudal-type homeobox protein 2; CDX-3; CDX3; Homeobox protein CDX-2
Accession No.	Swiss-Prot: Q99626NCBI Gene ID: 1045
Uniprot	Q99626
GeneID	1045;
SDS-PAGE MW	36kd
Concentration	1.0mg/ml
Formulation	Rabbit IgG in phosphate buffered saline (without Mg ²⁺ and Ca ²⁺), pH 7.4, 150mM NaCl, 0.02% sodium azide and 50% glycerol.
Storage	Store at -20°C

Application Details

Western blotting: 1:500~1:3000

Images



Western blot analysis of extracts from K562 cells, using CDX2 antibody #35198.

Background

Involved in the transcriptional regulation of multiple genes expressed in the intestinal epithelium. Important in broad range of functions from early differentiation to maintenance of the intestinal epithelial lining of both the small and large intestine.

Drummond F.J., Ann. Hum. Genet. 61:393-400(1997).

Mallo G.V., Int. J. Cancer 74:35-44(1997).

Sivagnanasundaram S., Br. J. Cancer 84:218-225(2001).

Note: This product is for in vitro research use only