

STARD10 Antibody

Catalog No: #35208

Package Size: #35208-1 50ul #35208-2 100ul

Orders: order@signalwayantibody.comSupport: tech@signalwayantibody.com

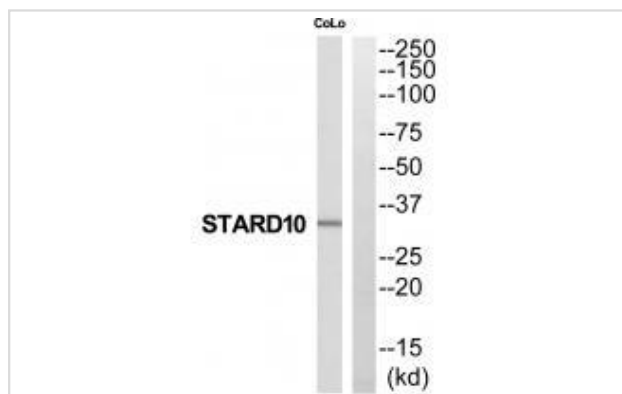
Description

Product Name	STARD10 Antibody
Host Species	Rabbit
Clonality	Polyclonal
Purification	The antibody was affinity-purified from rabbit antiserum by affinity-chromatography using epitope-specific immunogen.
Applications	WB
Species Reactivity	Hu Ms Rt
Specificity	The antibody detects endogenous levels of total STARD10 protein.
Immunogen Type	Peptide
Immunogen Description	Synthesized peptide derived from N-terminal of human STARD10.
Target Name	STARD10
Other Names	Antigen NY-CO-28; CGI-52; MGC14401; NY-CO-28; PCTL
Accession No.	Swiss-Prot: Q9Y365NCBI Gene ID: 10809
Uniprot	Q9Y365
GeneID	10809;
SDS-PAGE MW	33kd
Concentration	1.0mg/ml
Formulation	Rabbit IgG in phosphate buffered saline (without Mg ²⁺ and Ca ²⁺), pH 7.4, 150mM NaCl, 0.02% sodium azide and 50% glycerol.
Storage	Store at -20°C

Application Details

Western blotting: 1:500~1:3000

Images



Western blot analysis of extracts from COLO205 cells, using STARD10 antibody #35208.

Background

May play metabolic roles in sperm maturation or fertilization By similarity. Phospholipid transfer protein that preferentially selects lipid species containing a palmitoyl or stearoyl chain on the sn-1 and an unsaturated fatty acyl chain (18:1 or 18:2) on the sn-2 position. Able to transfer phosphatidylcholine (PC) and phosphatidylethanolamine (PE) between membranes.

Lai C.-H., Genome Res. 10:703-713(2000).

Scanlan M.J., Int. J. Cancer 76:652-658(1998).

Note: This product is for in vitro research use only