

## SLC30A9 Antibody

Catalog No: #35210

Package Size: #35210-1 50ul #35210-2 100ul

Orders: [order@signalwayantibody.com](mailto:order@signalwayantibody.com)Support: [tech@signalwayantibody.com](mailto:tech@signalwayantibody.com)

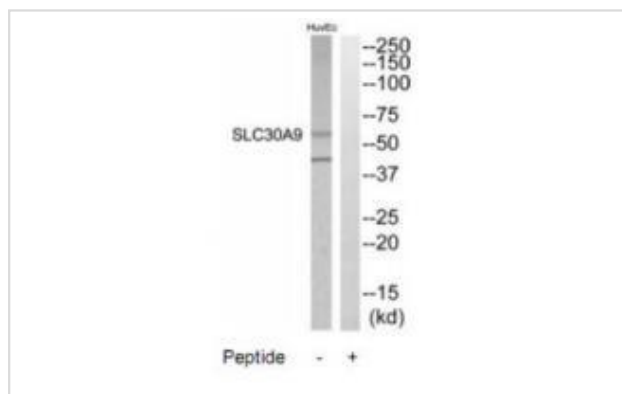
## Description

Product Name	SLC30A9 Antibody
Host Species	Rabbit
Clonality	Polyclonal
Purification	The antibody was affinity-purified from rabbit antiserum by affinity-chromatography using epitope-specific immunogen.
Applications	WB
Species Reactivity	Hu
Specificity	The antibody detects endogenous levels of total SLC30A9 protein.
Immunogen Type	Peptide
Immunogen Description	Synthesized peptide derived from internal of human SLC30A9.
Target Name	SLC30A9
Other Names	Zinc transporter 9; ZnT-9; Solute carrier family 30 member 9; Human embryonic lung protein; HUEL
Accession No.	Swiss-Prot: Q9Y6R2NCBI Gene ID: 10463
Uniprot	Q6PML9
GeneID	10463;
SDS-PAGE MW	60kd
Concentration	1.0mg/ml
Formulation	Rabbit IgG in phosphate buffered saline (without Mg <sup>2+</sup> and Ca <sup>2+</sup> ), pH 7.4, 150mM NaCl, 0.02% sodium azide and 50% glycerol.
Storage	Store at -20°C

## Application Details

Western blotting: 1:500~1:3000

## Images



Western blot analysis of extracts from HuvEC cells, using SLC30A9 antibody #35210.

## Background

---

Plays a role in the p160 coactivator signaling pathway that mediates transcriptional activation by nuclear receptors (By similarity). Plays a role in transcriptional activation of Wnt-responsive genes.

Sim D.L.C., Submitted (APR-2000).

Sha J.H., Submitted (JUN-2003).

RIKEN structural genomics initiative (RSGI), Submitted (FEB-2009).

---

Note: This product is for in vitro research use only