

## GAB2 Antibody

Catalog No: #35218

Package Size: #35218-1 50ul #35218-2 100ul

Orders: [order@signalwayantibody.com](mailto:order@signalwayantibody.com)Support: [tech@signalwayantibody.com](mailto:tech@signalwayantibody.com)

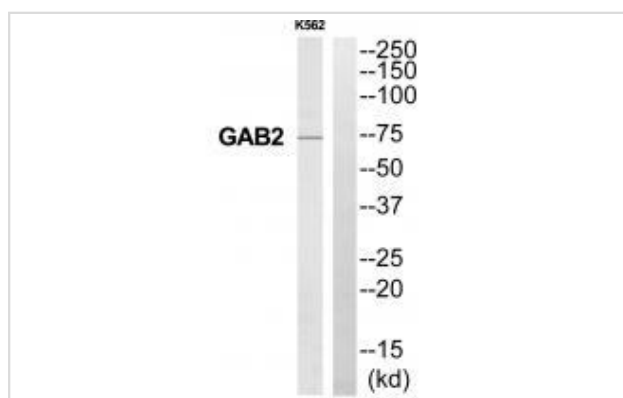
## Description

Product Name	GAB2 Antibody
Host Species	Rabbit
Clonality	Polyclonal
Purification	The antibody was affinity-purified from rabbit antiserum by affinity-chromatography using epitope-specific immunogen.
Applications	WB
Species Reactivity	Hu Ms Rt
Specificity	The antibody detects endogenous levels of total GAB2 protein.
Immunogen Type	Peptide
Immunogen Description	Synthesized peptide derived from Internal of human GAB2.
Target Name	GAB2
Other Names	GAB2; GRB2-associated binder 2; GRB2-associated binding protein 2; GRB2-associated-binding protein 2; Growth factor receptor bound protein 2-associated protein 2
Accession No.	Swiss-Prot: Q9UQC2NCBI Gene ID: 9846
Uniprot	Q9UQC2
GeneID	9846;
SDS-PAGE MW	74kd
Concentration	1.0mg/ml
Formulation	Rabbit IgG in phosphate buffered saline (without Mg2+ and Ca2+), pH 7.4, 150mM NaCl, 0.02% sodium azide and 50% glycerol.
Storage	Store at -20°C

## Application Details

Western blotting: 1:500~1:3000

## Images



Western blot analysis of extracts from K562 cells, using GAB2 antibody #35218.

## Background

---

Adapter protein which acts downstream of several membrane receptors including cytokine, antigen, hormone, cell matrix and growth factor receptors to regulate multiple signaling pathways. Regulates osteoclast differentiation mediating the TNFRSF11A/RANK signaling. In allergic response, it plays a role in mast cells activation and degranulation through PI-3-kinase regulation. Also involved in the regulation of cell proliferation and hematopoiesis.

Nishida K., Blood 93:1809-1816(1999).

Nagase T., DNA Res. 5:31-39(1998).

Nagase T., Submitted (JAN-2004) to the EMBL/GenBank/DDBJ databases.

---

Note: This product is for in vitro research use only