

## KRT37/38 Antibody

Catalog No: #35229

Package Size: #35229-1 50ul #35229-2 100ul

Orders: [order@signalwayantibody.com](mailto:order@signalwayantibody.com)Support: [tech@signalwayantibody.com](mailto:tech@signalwayantibody.com)

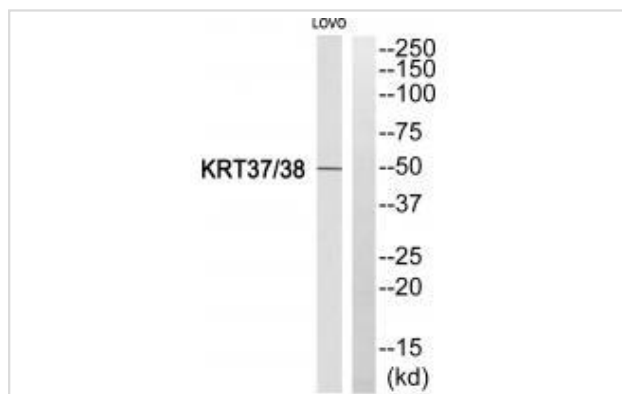
## Description

Product Name	KRT37/38 Antibody
Host Species	Rabbit
Clonality	Polyclonal
Purification	The antibody was affinity-purified from rabbit antiserum by affinity-chromatography using epitope-specific immunogen.
Applications	WB
Species Reactivity	Hu
Specificity	The antibody detects endogenous levels of total KRT37/38 protein.
Immunogen Type	Peptide
Immunogen Description	Synthesized peptide derived from internal of human KRT37/38.
Target Name	KRT37/38
Other Names	Keratin; type I cuticular Ha8; Hair keratin; type I Ha8; Keratin-38
Accession No.	Swiss-Prot: O76015/O76014NCBI Gene ID: 8688
Uniprot	O76015
GeneID	8687;
SDS-PAGE MW	50kd
Concentration	1.0mg/ml
Formulation	Rabbit IgG in phosphate buffered saline (without Mg <sup>2+</sup> and Ca <sup>2+</sup> ), pH 7.4, 150mM NaCl, 0.02% sodium azide and 50% glycerol.
Storage	Store at -20°C

## Application Details

Western blotting: 1:500~1:3000

## Images



Western blot analysis of extracts from LOVO cells, using KRT37/38 antibody #35229.

## Background

---

The protein encoded by this gene is a member of the keratin gene family. As a type I hair keratin, it is an acidic protein which heterodimerizes with type II keratins to form hair and nails. The type I hair keratins are clustered in a region of chromosome 17q12-q21 and have the same direction of transcription.

Rogers M.A., J. Biol. Chem. 273:26683-26691(1998) .

The MGC Project Team, Genome Res. 14:2121-2127(2004).

Zody M.C., Nature 440:1045-1049(2006).

---

**Note:** This product is for in vitro research use only