

MX2 Antibody

Catalog No: #35230

Package Size: #35230-1 50ul #35230-2 100ul

Orders: order@signalwayantibody.comSupport: tech@signalwayantibody.com

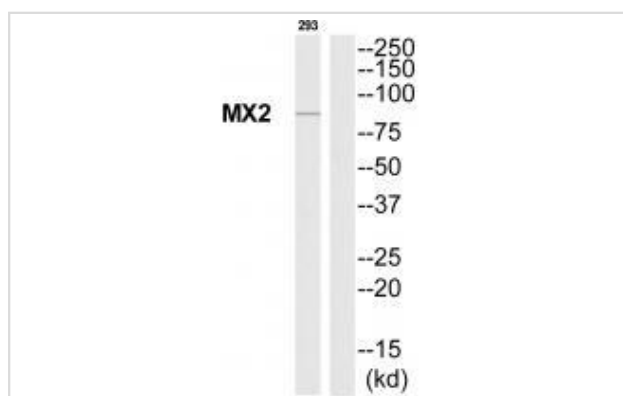
Description

Product Name	MX2 Antibody
Host Species	Rabbit
Clonality	Polyclonal
Purification	The antibody was affinity-purified from rabbit antiserum by affinity-chromatography using epitope-specific immunogen.
Applications	WB
Species Reactivity	Hu
Specificity	The antibody detects endogenous levels of total MX2 protein.
Immunogen Type	Peptide
Immunogen Description	Synthesized peptide derived from Internal of human MX2.
Target Name	MX2
Other Names	Interferon-induced GTP-binding protein Mx2; Interferon-regulated resistance GTP-binding protein MxB; MX2; MxB; myxovirus (influenza virus) resistance 2 (mouse)
Accession No.	Swiss-Prot: P20592NCBI Gene ID: 4600
Uniprot	P20592
GeneID	4600;
SDS-PAGE MW	82kd
Concentration	1.0mg/ml
Formulation	Rabbit IgG in phosphate buffered saline (without Mg2+ and Ca2+), pH 7.4, 150mM NaCl, 0.02% sodium azide and 50% glycerol.
Storage	Store at -20°C

Application Details

Western blotting: 1:500~1:3000

Images



Western blot analysis of extracts from 293 cells, using MX2 antibody #35230.

Background

Interferon-induced dynamin-like GTPase with potent antiviral activity against human immunodeficiency virus type 1 (HIV-1). Acts by targeting the viral capsid and affects the nuclear uptake and/or stability of the HIV-1 replication complex and the subsequent chromosomal integration of the proviral DNA. Exhibits antiviral activity also against simian immunodeficiency virus (SIV-mnd). May play a role in regulating nucleocytoplasmic transport and cell-cycle progression.

Aebi M., Mol. Cell. Biol. 9:5062-5072(1989).

Hattori M., Nature 405:311-319(2000).

Mural R.J., Submitted (SEP-2005) to the EMBL/GenBank/DDBJ databases.

Note: This product is for in vitro research use only