

ANAPC5 Antibody

Catalog No: #35242

Package Size: #35242-1 50ul #35242-2 100ul

Orders: order@signalwayantibody.com

Support: tech@signalwayantibody.com

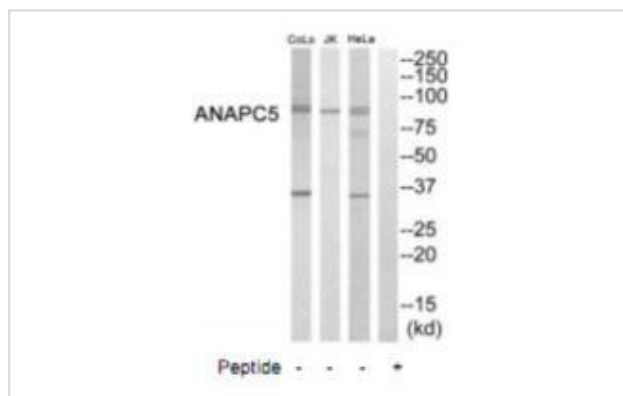
Description

Product Name	ANAPC5 Antibody
Host Species	Rabbit
Clonality	Polyclonal
Purification	The antibody was affinity-purified from rabbit antiserum by affinity-chromatography using epitope-specific immunogen.
Applications	WB
Species Reactivity	Hu
Specificity	The antibody detects endogenous levels of total ANAPC5 protein.
Immunogen Type	Peptide
Immunogen Description	Synthesized peptide derived from internal of human ANAPC5.
Target Name	ANAPC5
Other Names	ANAPC5; Anaphase-promoting complex subunit 5; ANC5; Similar to anaphase-promoting complex subunit 5;
Accession No.	Swiss-Prot: Q9UJX4NCBI Gene ID: 51433
Uniprot	Q9UJX4
GeneID	51433;
SDS-PAGE MW	85kd
Concentration	1.0mg/ml
Formulation	Rabbit IgG in phosphate buffered saline (without Mg ²⁺ and Ca ²⁺), pH 7.4, 150mM NaCl, 0.02% sodium azide and 50% glycerol.
Storage	Store at -20°C

Application Details

Western blotting: 1:500~1:3000

Images



Western blot analysis of extracts from HeLa cells, Jurkat cells and COLO205 cells, using ANAPC5 antibody #35242.

Background

Component of the anaphase promoting complex/cyclosome (APC/C), a cell cycle-regulated E3 ubiquitin ligase that controls progression through mitosis and the G1 phase of the cell cycle. The APC/C complex acts by mediating ubiquitination and subsequent degradation of target proteins: it mainly mediates the formation of 'Lys-11'-linked polyubiquitin chains and, to a lower extent, the formation of 'Lys-48'- and 'Lys-63'-linked polyubiquitin chains.

Yu H., Science 279:1219-1222(1998).

Bechtel S., BMC Genomics 8:399-399(2007).

Kraft C., EMBO J. 22:6598-6609(2003).

Note: This product is for in vitro research use only