

## CC14A Antibody

Catalog No: #35243

Package Size: #35243-1 50ul #35243-2 100ul

Orders: [order@signalwayantibody.com](mailto:order@signalwayantibody.com)Support: [tech@signalwayantibody.com](mailto:tech@signalwayantibody.com)

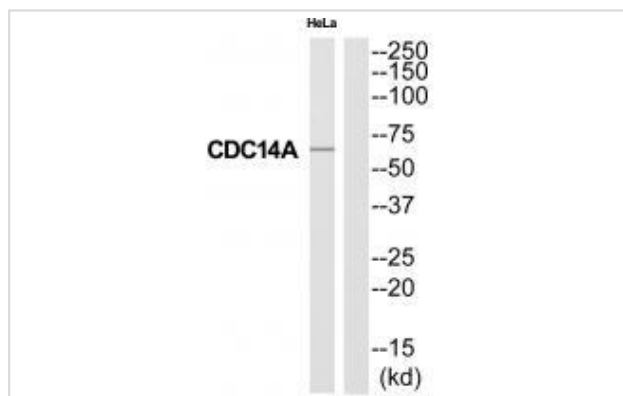
## Description

Product Name	CC14A Antibody
Host Species	Rabbit
Clonality	Polyclonal
Purification	The antibody was affinity-purified from rabbit antiserum by affinity-chromatography using epitope-specific immunogen.
Applications	WB
Species Reactivity	Hu
Specificity	The antibody detects endogenous levels of total CC14A protein.
Immunogen Type	Peptide
Immunogen Description	Synthesized peptide derived from Internal of human CC14A.
Target Name	CC14A
Other Names	CC14A; CDC10 (cell division cycle 10; S. cerevisiae; homolog); cdc14
Accession No.	Swiss-Prot: Q9UNH5NCBI Gene ID: 8556
Uniprot	Q9UNH5
GeneID	8556;
SDS-PAGE MW	66kd
Concentration	1.0mg/ml
Formulation	Rabbit IgG in phosphate buffered saline (without Mg <sup>2+</sup> and Ca <sup>2+</sup> ), pH 7.4, 150mM NaCl, 0.02% sodium azide and 50% glycerol.
Storage	Store at -20°C

## Application Details

Western blotting: 1:500~1:3000

## Images



Western blot analysis of extracts from HeLa cells, using CC14A antibody #35243.

## Background

---

Dual-specificity phosphatase. Required for centrosome separation and productive cytokinesis during cell division. May dephosphorylate the APC subunit FZR1/CDH1, thereby promoting APC-FZR1 dependent degradation of mitotic cyclins and subsequent exit from mitosis.

Li L., J. Biol. Chem. 272:29403-29406(1997).

Wong A.K.C., Genomics 59:248-251(1999).

Gregory S.G., Nature 441:315-321(2006).

---

Note: This product is for in vitro research use only