

XPNPEP3 antibody

Catalog No: #22002

Orders: order@signalwayantibody.comSupport: tech@signalwayantibody.com

Description

Product Name	XPNPEP3 antibody
Host Species	Rabbit
Clonality	Polyclonal
Purification	Purified by antigen-affinity chromatography.
Applications	WB IF
Species Reactivity	Hu
Immunogen Type	Recombinant protein
Immunogen Description	Recombinant protein fragment contain a sequence corresponding to a region within amino acids 12 and 482 of XPNPEP3
Target Name	XPNPEP3
Other Names	APP3
Accession No.	Swiss-Prot:Q9NQH7Gene ID:63929
Uniprot	Q9NQH7
GeneID	63929;
Concentration	1mg/ml
Formulation	Supplied in 0.1M Tris-buffered saline with 10% Glycerol (pH7.0). 0.01% Thimerosal was added as a preservative.
Storage	Store at -20°C for long term preservation (recommended). Store at 4°C for short term use.

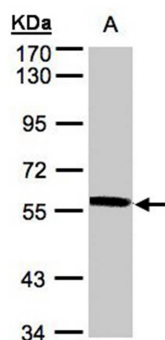
Application Details

Predicted MW: 57kd

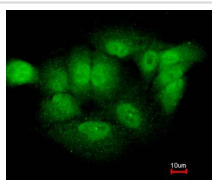
Western blotting: 1:500-1:3000

Immunofluorescence: 1:100-1:200

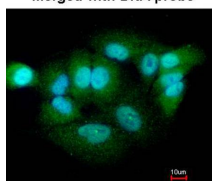
Images



Sample(30 ug whole cell lysate)
A: A431
7.5% SDS PAGE
Primary antibody diluted at 1: 500



Merged with DNA probe



Immunofluorescence analysis of paraformaldehyde-fixed A549, using XPNPEP3 antibody at 1: 200 dilution.

Note: This product is for in vitro research use only