

CYP2A7 Antibody

Catalog No: #35266

Package Size: #35266-1 50ul #35266-2 100ul

Orders: order@signalwayantibody.comSupport: tech@signalwayantibody.com

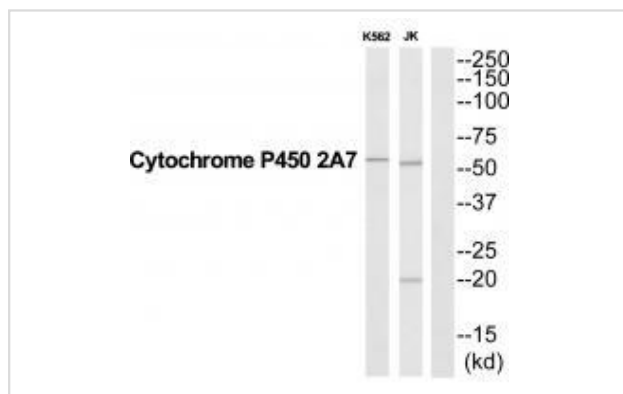
Description

Product Name	CYP2A7 Antibody
Host Species	Rabbit
Clonality	Polyclonal
Purification	The antibody was affinity-purified from rabbit antiserum by affinity-chromatography using epitope-specific immunogen.
Applications	WB
Species Reactivity	Hu
Specificity	The antibody detects endogenous levels of total CYP2A7protein.
Immunogen Type	Peptide
Immunogen Description	Synthesized peptide derived from Internal of human CYP2A7.
Target Name	CYP2A7
Other Names	CP2A7; CPA7; CPAD; CYP2A; CYP2A7
Accession No.	Swiss-Prot: P20853NCBI Gene ID: 1549
Uniprot	P20853
GeneID	1549;
SDS-PAGE MW	56kd
Concentration	1.0mg/ml
Formulation	Rabbit IgG in phosphate buffered saline (without Mg ²⁺ and Ca ²⁺), pH 7.4, 150mM NaCl, 0.02% sodium azide and 50% glycerol.
Storage	Store at -20°C

Application Details

Western blotting: 1:500~1:3000

Images



Western blot analysis of extracts from K562/Jurkat cells, using CYP2A7 antibody #35266.

Background

Cytochromes P450 are a group of heme-thiolate monooxygenases. In liver microsomes, this enzyme is involved in an NADPH-dependent electron transport pathway. It oxidizes a variety of structurally unrelated compounds, including steroids, fatty acids, and xenobiotics.

Yamano S., Biochemistry 29:1322-1329(1990).

Fernandez-Salguero P., Am. J. Hum. Genet. 57:651-660(1995).

Note: This product is for in vitro research use only