

## Cytochrome P450 8B1 Antibody

Catalog No: #35273



Package Size: #35273-1 50ul #35273-2 100ul

Orders: [order@signalwayantibody.com](mailto:order@signalwayantibody.com)Support: [tech@signalwayantibody.com](mailto:tech@signalwayantibody.com)

## Description

Product Name	Cytochrome P450 8B1 Antibody
Host Species	Rabbit
Clonality	Polyclonal
Purification	The antibody was affinity-purified from rabbit antiserum by affinity-chromatography using epitope-specific immunogen.
Applications	WB IHC IF ELISA
Species Reactivity	Human Mouse
Specificity	The antibody detects endogenous levels of total Cytochrome P450 8B1 protein.
Immunogen Type	Peptide
Immunogen Description	Synthesized peptide derived from internal of human Cytochrome P450 8B1.
Target Name	Cytochrome P450 8B1
Other Names	Cytochrome P450; family 8; subfamily B; polypeptide 1; CYP8B1
Accession No.	Swiss-Prot: Q9UNU6NCBI Gene ID: 1582
Uniprot	Q9UNU6
GeneID	1582;
SDS-PAGE MW	58kd
Concentration	1.0mg/ml
Formulation	Rabbit IgG in phosphate buffered saline (without Mg <sup>2+</sup> and Ca <sup>2+</sup> ), pH 7.4, 150mM NaCl, 0.02% sodium azide and 50% glycerol.
Storage	Store at -20°C

## Application Details

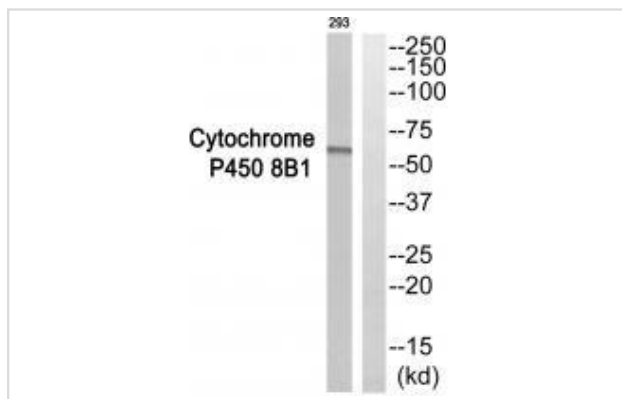
WB 1:500-1:2000

IHC 1:100-1:300

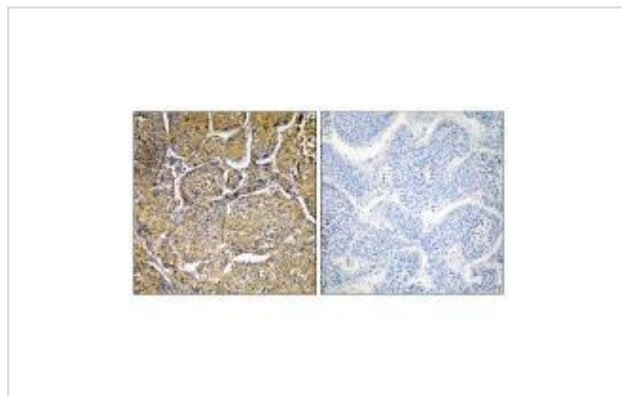
IF 1:50-200

ELISA 1:40000

## Images



Western blot analysis of extracts from 293 cells, using Cytochrome P450 8B1 antibody #35273.



Immunohistochemistry analysis of paraffin-embedded human liver carcinoma tissue, using Cytochrome P450 8B1 antibody #35273.

## Background

Involved in bile acid synthesis and is responsible for the conversion of 7 alpha-hydroxy-4-cholesten-3-one into 7 alpha, 12 alpha-dihydroxy-4-cholesten-3-one. Responsible for the balance between formation of cholic acid and chenodeoxycholic acid. Has a rather broad substrate specificity including a number of 7-alpha-hydroxylated C27 steroids.

Gaafvels M., Genomics 56:184-196(1999).

Ota T., Nat. Genet. 36:40-45(2004).

Muzny D.M., Nature 440:1194-1198(2006)

Note: This product is for in vitro research use only