

KCNJ4 Antibody

Catalog No: #35275

Package Size: #35275-1 50ul #35275-2 100ul

Orders: order@signalwayantibody.com

Support: tech@signalwayantibody.com

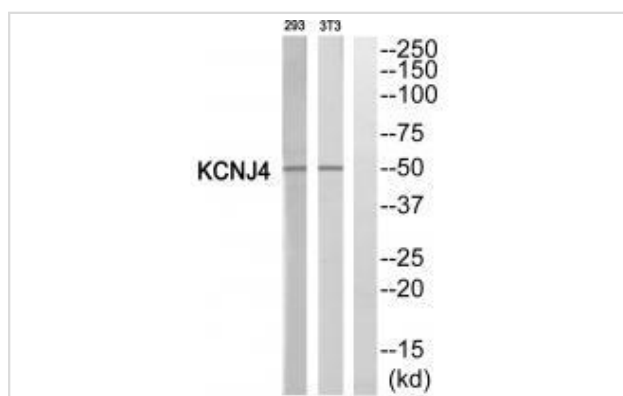
Description

Product Name	KCNJ4 Antibody
Host Species	Rabbit
Clonality	Polyclonal
Purification	The antibody was affinity-purified from rabbit antiserum by affinity-chromatography using epitope-specific immunogen.
Applications	WB
Species Reactivity	Hu Ms
Specificity	The antibody detects endogenous levels of total KCNJ4 protein.
Immunogen Type	Peptide
Immunogen Description	Synthesized peptide derived from internal of human KCNJ4.
Target Name	KCNJ4
Other Names	Hippocampal inward rectifier; HIRK2; HRK1; Inward rectifier K channel Kir2.3; Inward rectifier potassium channel 4
Accession No.	Swiss-Prot: P48050NCBI Gene ID: 3761
Uniprot	P48050
GeneID	3761;
SDS-PAGE MW	50kd
Concentration	1.0mg/ml
Formulation	Rabbit IgG in phosphate buffered saline (without Mg ²⁺ and Ca ²⁺), pH 7.4, 150mM NaCl, 0.02% sodium azide and 50% glycerol.
Storage	Store at -20°C

Application Details

Western blotting: 1:500~1:3000

Images



Western blot analysis of extracts from 293 cells and NIH/3T3 cells, using KCNJ4 antibody #35275.

Background

Inward rectifier potassium channels are characterized by a greater tendency to allow potassium to flow into the cell rather than out of it. Their voltage dependence is regulated by the concentration of extracellular potassium; as external potassium is raised, the voltage range of the channel opening shifts to more positive voltages. The inward rectification is mainly due to the blockage of outward current by internal magnesium. Can be blocked by extracellular barium and cesium By similarity.

Perier F., Proc. Natl. Acad. Sci. U.S.A. 91:6240-6244(1994).

Tang W., FEBS Lett. 348:239-243(1994).

Makhina E.N., J. Biol. Chem. 269:20468-20474(1994).

Note: This product is for in vitro research use only