

STK10 Antibody

Catalog No: #35288

Package Size: #35288-1 50ul #35288-2 100ul

Orders: order@signalwayantibody.comSupport: tech@signalwayantibody.com

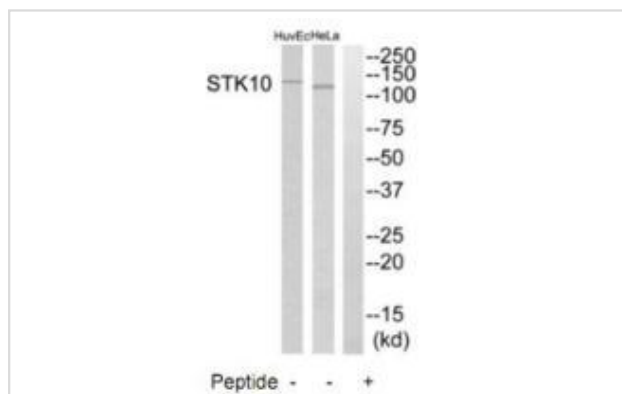
Description

Product Name	STK10 Antibody
Host Species	Rabbit
Clonality	Polyclonal
Purification	The antibody was affinity-purified from rabbit antiserum by affinity-chromatography using epitope-specific immunogen.
Applications	WB
Species Reactivity	Hu
Specificity	The antibody detects endogenous levels of total STK10 protein.
Immunogen Type	Peptide
Immunogen Description	Synthesized peptide derived from internal of human STK10.
Target Name	STK10
Other Names	kinase GEK2; LOK; Lymphocyte-oriented kinase; Serine/threonine protein kinase 10; STK10
Accession No.	Swiss-Prot: O94804NCBI Gene ID: 6793
Uniprot	O94804
GeneID	6793;
SDS-PAGE MW	120kd
Concentration	1.0mg/ml
Formulation	Rabbit IgG in phosphate buffered saline (without Mg ²⁺ and Ca ²⁺), pH 7.4, 150mM NaCl, 0.02% sodium azide and 50% glycerol.
Storage	Store at -20°C

Application Details

Western blotting: 1:500~1:3000

Images



Western blot analysis of extracts from HeLa cells and HuvEc cells, using STK10 antibody #35288.

Background

Serine/threonine-protein kinase involved in regulation of lymphocyte migration. Phosphorylates MSN, and possibly PLK1. Involved in regulation of lymphocyte migration by mediating phosphorylation of ERM proteins such as MSN. Acts as a negative regulator of MAP3K1/MEKK1. May also act as a cell cycle regulator by acting as a polo kinase kinase: mediates phosphorylation of PLK1 in vitro; however such data require additional evidences in vivo.

Kuramochi S., Immunogenetics 49:369-375(1999).

Ota T., Nat. Genet. 36:40-45(2004).

Schmutz J., Nature 431:268-274(2004).

Note: This product is for in vitro research use only