

## BTLA Antibody

Catalog No: #35313

Package Size: #35313-1 50ul #35313-2 100ul

Orders: [order@signalwayantibody.com](mailto:order@signalwayantibody.com)Support: [tech@signalwayantibody.com](mailto:tech@signalwayantibody.com)

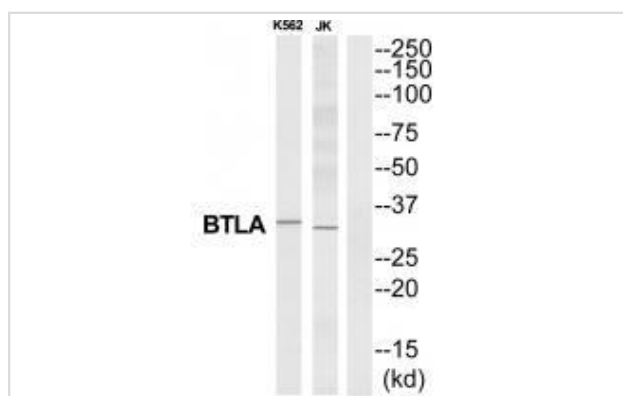
## Description

Product Name	BTLA Antibody
Host Species	Rabbit
Clonality	Polyclonal
Purification	The antibody was affinity-purified from rabbit antiserum by affinity-chromatography using epitope-specific immunogen.
Applications	WB
Species Reactivity	Hu
Specificity	The antibody detects endogenous levels of total BTLA protein.
Immunogen Type	Peptide
Immunogen Description	Synthesized peptide derived from C-terminal of human BTLA.
Target Name	BTLA
Other Names	B and T lymphocyte associated; B and T lymphocyte attenuator; B- and T-lymphocyte attenuator; B- and T-lymphocyte-associated protein; BTLA
Accession No.	Swiss-Prot: Q7Z6A9NCBI Gene ID: 151888
Uniprot	Q7Z6A9
GeneID	151888;
SDS-PAGE MW	33kd
Concentration	1.0mg/ml
Formulation	Rabbit IgG in phosphate buffered saline (without Mg <sup>2+</sup> and Ca <sup>2+</sup> ), pH 7.4, 150mM NaCl, 0.02% sodium azide and 50% glycerol.
Storage	Store at -20°C

## Application Details

Western blotting: 1:500~1:3000

## Images



Western blot analysis of extracts from K562/Jurkat cells, using BTLA antibody #35313.

## Background

---

Lymphocyte inhibitory receptor which inhibits lymphocytes during immune response.

Watanabe N., Nat. Immunol. 4:670-679(2003).

Mao Y., Submitted (APR-2004) to the EMBL/GenBank/DDBJ databases.

Oaks M.K., Submitted (SEP-2005) to the EMBL/GenBank/DDBJ databases.

---

Note: This product is for in vitro research use only