

FCRL5 Antibody

Catalog No: #35315

Package Size: #35315-1 50ul #35315-2 100ul

Orders: order@signalwayantibody.comSupport: tech@signalwayantibody.com

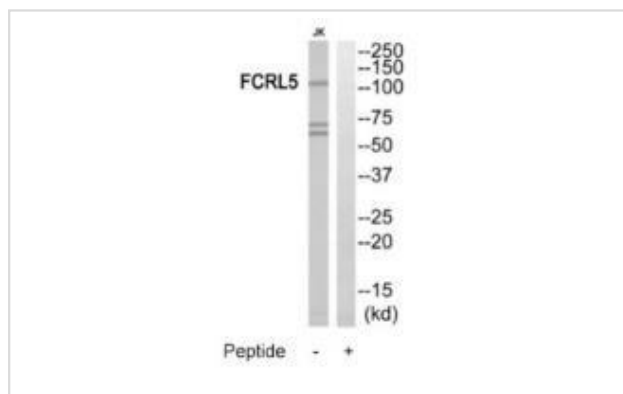
Description

Product Name	FCRL5 Antibody
Host Species	Rabbit
Clonality	Polyclonal
Purification	The antibody was affinity-purified from rabbit antiserum by affinity-chromatography using epitope-specific immunogen.
Applications	WB
Species Reactivity	Hu
Specificity	The antibody detects endogenous levels of total FCRL5 protein.
Immunogen Type	Peptide
Immunogen Description	Synthesized peptide derived from internal of human FCRL5.
Target Name	FCRL5
Other Names	Fc receptor-like protein 5; FcR-like protein 5; FcRL5; Fc receptor homolog 5; FcRH5
Accession No.	Swiss-Prot: Q96RD9NCBI Gene ID: 83416
Uniprot	Q96RD9
GeneID	83416;
SDS-PAGE MW	107kd
Concentration	1.0mg/ml
Formulation	Rabbit IgG in phosphate buffered saline (without Mg ²⁺ and Ca ²⁺), pH 7.4, 150mM NaCl, 0.02% sodium azide and 50% glycerol.
Storage	Store at -20°C

Application Details

Western blotting: 1:500~1:3000

Images



Western blot analysis of extracts from Jurkat cells, using FCRL5 antibody #35315.

Background

May be involved in B-cell development and differentiation in peripheral lymphoid organs and may be useful markers of B-cell stages. May have an immunoregulatory role in marginal zone B-cells.

Nakayama Y., Biochem. Biophys. Res. Commun. 285:830-837(2001).

Hatzivassiliou G., Immunity 14:277-289(2001).

Davis R.S., Proc. Natl. Acad. Sci. U.S.A. 98:9772-9777(2001).

Note: This product is for in vitro research use only