

INA Antibody

Catalog No: #35325

Package Size: #35325-1 50ul #35325-2 100ul

Orders: order@signalwayantibody.comSupport: tech@signalwayantibody.com

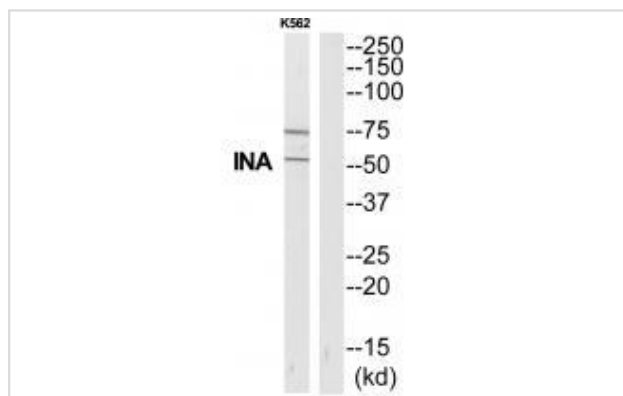
Description

Product Name	INA Antibody
Host Species	Rabbit
Clonality	Polyclonal
Purification	The antibody was affinity-purified from rabbit antiserum by affinity-chromatography using epitope-specific immunogen.
Applications	WB
Species Reactivity	Hu Ms Rt
Specificity	The antibody detects endogenous levels of total INA protein.
Immunogen Type	Peptide
Immunogen Description	Synthesized peptide derived from Internal of human INA.
Target Name	INA
Other Names	66 kDa neurofilament protein; AINX; Alpha-internexin; Alpha-Inx; FLJ18662
Accession No.	Swiss-Prot: Q16352NCBI Gene ID: 9118
Uniprot	Q16352
GeneID	9118;
SDS-PAGE MW	56kd
Concentration	1.0mg/ml
Formulation	Rabbit IgG in phosphate buffered saline (without Mg ²⁺ and Ca ²⁺), pH 7.4, 150mM NaCl, 0.02% sodium azide and 50% glycerol.
Storage	Store at -20°C

Application Details

Western blotting: 1:500~1:3000

Images



Western blot analysis of extracts from K562 cells, using INA antibody #35325.

Background

Class-IV neuronal intermediate filament that is able to self-assemble. It is involved in the morphogenesis of neurons. It may form an independent structural network without the involvement of other neurofilaments or it may cooperate with NF-L to form the filamentous backbone to which NF-M and NF-H attach to form the cross-bridges.

Chan S.-O., Brain Res. Mol. Brain Res. 29:177-184(1995).

Deloukas P., Nature 429:375-381(2004).

Mural R.J., Submitted (SEP-2005) to the EMBL/GenBank/DDBJ databases.

Note: This product is for in vitro research use only