

## RBMV1A1 antibody

Catalog No: #22011

Orders: order@signalwayantibody.com

Support: tech@signalwayantibody.com

## Description

Product Name	RBMV1A1 antibody
Host Species	Rabbit
Clonality	Polyclonal
Purification	Purified by antigen-affinity chromatography.
Applications	WB IHC
Species Reactivity	Hu
Immunogen Type	Recombinant protein
Immunogen Description	Recombinant protein fragment contain a sequence corresponding to a region within amino acids 253 and 474 of RBMV1A1
Target Name	RBMV1A1
Accession No.	Swiss-Prot:P0DJJD3Gene ID:378949
Uniprot	P0DJJD3
GeneID	378949;5940;
Concentration	1mg/ml
Formulation	Supplied in 0.1M Tris-buffered saline with 10% Glycerol (pH7.0). 0.01% Thimerosal was added as a preservative.
Storage	Store at -20°C for long term preservation (recommended). Store at 4°C for short term use.

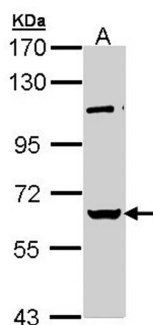
## Application Details

Predicted MW: 56kd

Western blotting: 1:500-1:3000

Immunohistochemistry: 1:100-1:250

## Images

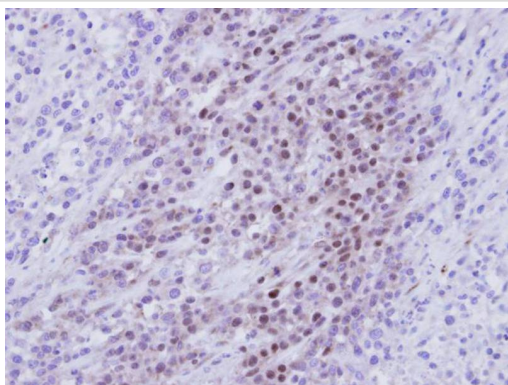


Sample (30 ug of whole cell lysate)

A: HeLa

7.5% SDS PAGE

Primary antibody diluted at 1: 1000



Immunohistochemical analysis of paraffin-embedded SAS Xenograft, using RBMY1A1 antibody at 1: 100 dilution.

## Background

This gene encodes a protein containing an RNA-binding motif in the N-terminus and four SRGY (serine, arginine, glycine, tyrosine) boxes in the C-terminus. Multiple copies of this gene are found in the AZFb azoospermia factor region of chromosome Y and the encoded protein is thought to be involved in spermatogenesis. Most copies of this locus are pseudogenes, although six highly similar copies have full-length ORFs and are considered functional. Four functional copies of this gene are found within inverted repeat IR2; two functional copies of this gene are found in palindrome P3, along with two copies of PTPN13-like, Y-linked. [provided by RefSeq]

Note: This product is for in vitro research use only