

## BCL2 Antibody

Catalog No: #35342

Orders: [order@signalwayantibody.com](mailto:order@signalwayantibody.com)Support: [tech@signalwayantibody.com](mailto:tech@signalwayantibody.com)

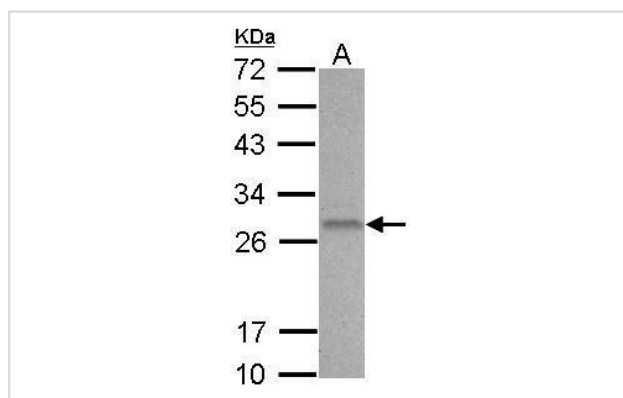
## Description

Product Name	BCL2 Antibody
Host Species	Rabbit
Clonality	Polyclonal
Purification	Antibodies were purified by antigen-affinity chromatography.
Applications	WB
Species Reactivity	Hu
Specificity	The antibody detects endogenous levels of total BCL2 protein.
Immunogen Type	Recombinant Protein
Immunogen Description	Recombinant fragment corresponding to a region within amino acids 1 and 125 of BCL2.
Target Name	BCL2
Other Names	Bcl-2 antibody; BCL2 antibody; "protein phosphatase 1; regulatory subunit 50 antibody"; apoptosis regulator Bcl-2 antibody; B-cell CLL/lymphoma 2 antibody
Accession No.	Swiss-Prot#:P10415;NCBI Gene#:596
Uniprot	P10415
GeneID	596;
SDS-PAGE MW	26kd
Concentration	1mg/ml
Formulation	Rabbit IgG in 1XPBS, 20% Glycerol (pH7). 0.01% Thimerosal was added as a preservative.
Storage	Store at -20°C

## Application Details

Western blotting: 1:1000-1:10000

## Images

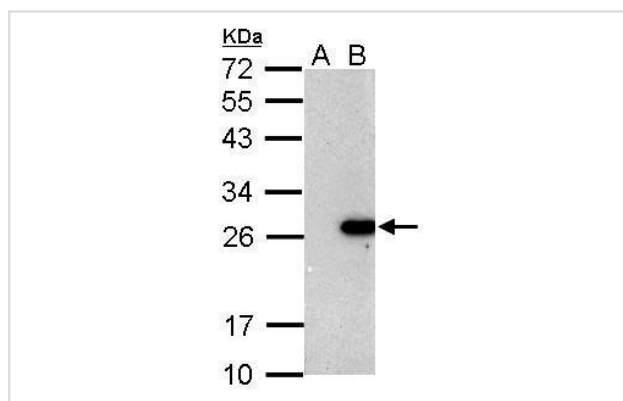


Sample (30 ug of whole cell lysate)

A: Raji

12% SDS PAGE

#35342 diluted at 1:1000



Sample (30 ug of whole cell lysate)  
A: Non-transfected 293T lysates  
B: BCL2 transfected 293T lysate  
12% SDS PAGE  
#35342 diluted at 1:5000

## Background

This gene encodes an integral outer mitochondrial membrane protein that blocks the apoptotic death of some cells such as lymphocytes. Constitutive expression of BCL2, such as in the case of translocation of BCL2 to Ig heavy chain locus, is thought to be the cause of follicular lymphoma. Two transcript variants, produced by alternate splicing, differ in their C-terminal ends. [provided by RefSeq]

Note: This product is for in vitro research use only