

CRK Antibody

Catalog No: #35352

Orders: order@signalwayantibody.comSupport: tech@signalwayantibody.com

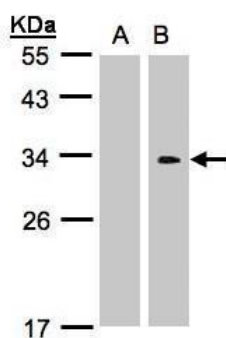
Description

Product Name	CRK Antibody
Host Species	Rabbit
Clonality	Polyclonal
Purification	Antibodies were purified by antigen-affinity chromatography.
Applications	WB
Species Reactivity	Hu
Specificity	The antibody detects endogenous levels of total CRK protein.
Immunogen Type	Recombinant Protein
Immunogen Description	Recombinant fragment corresponding to a region within amino acids 1 and 150 of CRK.
Target Name	CRK
Other Names	CRKII antibody; CRK antibody; adapter molecule crk antibody; proto-oncogene c-Crk antibody; v-crk sarcoma virus CT10 oncogene homolog (avian) antibody
Accession No.	Swiss-Prot#:P46108;NCBI Gene#:1398
Uniprot	P46108
GeneID	1398;
SDS-PAGE MW	34kd
Concentration	0.94mg/ml
Formulation	Rabbit IgG in 0.1M Tris, 0.1M Glycine, 10% Glycerol (pH7). 0.01% Thimerosal was added as a preservative.
Storage	Store at -20°C

Application Details

Western blotting: 1:500-1:3000

Images



Western Blot analysis of CRK expression in transfected 293T cell line by CRK polyclonal antibody.

A: Non-transfected lysate.

B: CRK transfected lysate.

12% SDS PAGE

#35352 diluted at 1:500

Background

This gene encodes a member of an adapter protein family that binds to several tyrosine-phosphorylated proteins. The product of this gene has several

SH2 and SH3 domains (src-homology domains) and is involved in several signaling pathways, recruiting cytoplasmic proteins in the vicinity of tyrosine kinase through SH2-phosphotyrosine interaction. The N-terminal SH2 domain of this protein functions as a positive regulator of transformation whereas the C-terminal SH3 domain functions as a negative regulator of transformation. Two alternative transcripts encoding different isoforms with distinct biological activity have been described. [provided by RefSeq]

Note: This product is for in vitro research use only