

Lck Antibody

Catalog No: #35363

Orders: order@signalwayantibody.comSupport: tech@signalwayantibody.com

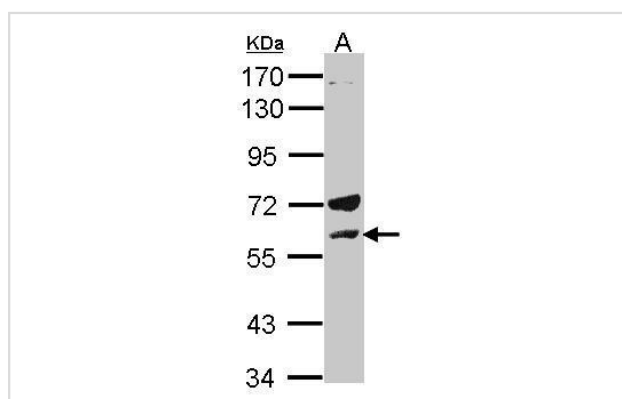
Description

Product Name	Lck Antibody
Host Species	Rabbit
Clonality	Polyclonal
Purification	Antibodies were purified by antigen-affinity chromatography.
Applications	WB
Species Reactivity	Hu Ms
Specificity	The antibody detects endogenous levels of total Lck protein.
Immunogen Type	Recombinant Protein
Immunogen Description	Recombinant fragment corresponding to a region within amino acids 311 and 509 of Lck.
Target Name	Lck
Other Names	LSK antibody; YT16 antibody; p56lck antibody; pp58lck antibody; LCK antibody; t cell-specific protein-tyrosine kinase antibody; tyrosine-protein kinase Lck antibody; p56(LSTRA) protein-tyrosine kinase antibody; proto-oncogene tyrosine-protein kinase LCK a
Accession No.	Swiss-Prot#:P06239;NCBI Gene#:3932
Uniprot	P06239
GeneID	3932;
SDS-PAGE MW	58kd
Concentration	1mg/ml
Formulation	Rabbit IgG in 0.1M Tris, 0.1M Glycine, 10% Glycerol (pH7). 0.01% Thimerosal was added as a preservative.
Storage	Store at -20°C

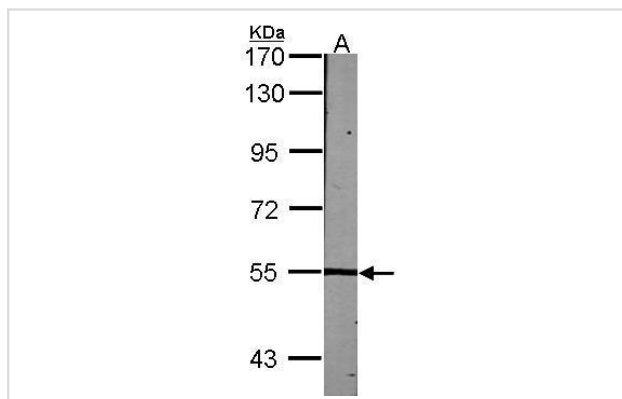
Application Details

Western blotting: 1:500-1:3000

Images



Sample(30 µg of whole cell lysate)
A:H1299
7.5% SDS PAGE
#35363 diluted at 1:500



Sample (30 ug of whole cell lysate)
A:NIH-3T3
7.5% SDS PAGE
#35363 diluted at 1:1000

Background

This gene is a member of the Src family of protein tyrosine kinases (PTKs). The encoded protein is a key signaling molecule in the selection and maturation of developing T-cells. It contains N-terminal sites for myristylation and palmitoylation, a PTK domain, and SH2 and SH3 domains which are involved in mediating protein-protein interactions with phosphotyrosine-containing and proline-rich motifs, respectively. The protein localizes to the plasma membrane and pericentrosomal vesicles, and binds to cell surface receptors, including CD4 and CD8, and other signaling molecules. Multiple alternatively spliced variants, encoding the same protein, have been described. [provided by RefSeq]

Note: This product is for in vitro research use only