

beta 2 Microglobulin Antibody

Catalog No: #35366

Orders: order@signalwayantibody.com

Support: tech@signalwayantibody.com

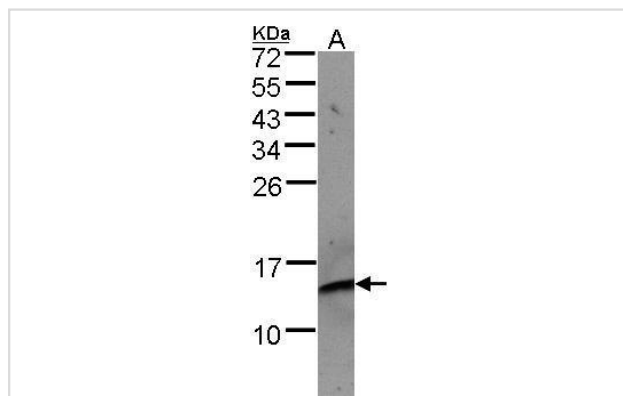
Description

Product Name	beta 2 Microglobulin Antibody
Host Species	Rabbit
Clonality	Polyclonal
Purification	Antibodies were purified by antigen-affinity chromatography.
Applications	WB
Species Reactivity	Hu
Specificity	The antibody detects endogenous levels of total beta 2 Microglobulin protein.
Immunogen Type	Recombinant Protein
Immunogen Description	Recombinant fragment corresponding to a region within amino acids 1 and 119 of beta 2 Microglobulin.
Target Name	beta 2 Microglobulin
Other Names	B2M antibody; beta-2-microglobulin antibody; beta-2-microglobin antibody; beta chain of MHC class I molecules antibody
Accession No.	Swiss-Prot#:P61769;NCBI Gene#:567
Uniprot	P61769
GeneID	567;
SDS-PAGE MW	14kd
Concentration	0.41mg/ml
Formulation	Rabbit IgG in 1XPBS, 10% Glycerol (pH7). 0.01% Thimerosal was added as a preservative.
Storage	Store at -20°C

Application Details

Western blotting: 1:500-1:3000

Images



Sample(30 µg of whole cell lysate)
A:Raji
15% SDS PAGE
#35366 diluted at 1:500

Background

Beta-2-microglobulin is a serum protein found in association with the major histocompatibility complex (MHC) class I heavy chain on the surface of

nearly all nucleated cells (Gussow et al., 1987 [PubMed 3312414]).[supplied by OMIM]

Note: This product is for in vitro research use only