

CD14 Antibody

Catalog No: #35368

Orders: order@signalwayantibody.com

Support: tech@signalwayantibody.com

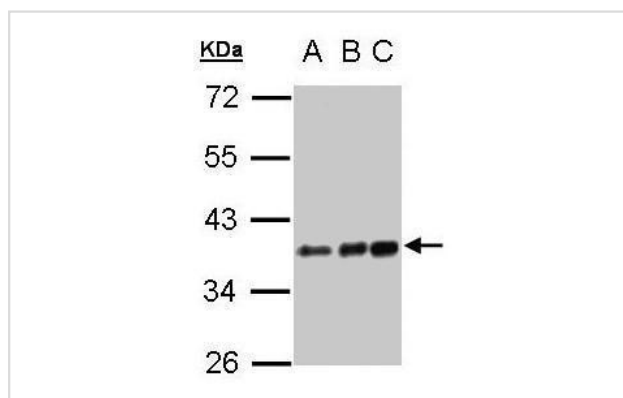
Description

Product Name	CD14 Antibody
Host Species	Rabbit
Clonality	Polyclonal
Purification	Antibodies were purified by antigen-affinity chromatography.
Applications	WB
Species Reactivity	Hu
Specificity	The antibody detects endogenous levels of total CD14 protein.
Immunogen Type	Recombinant Protein
Immunogen Description	Recombinant fragment corresponding to a region within amino acids 1 and 177 of CD14.
Target Name	CD14
Other Names	CD14 antibody; myeloid cell-specific leucine-rich glycoprotein antibody; monocyte differentiation antigen CD14 antibody; CD14 molecule antibody
Accession No.	Swiss-Prot#:P08571;NCBI Gene#:929
Uniprot	P08571
GeneID	929;
SDS-PAGE MW	40kd
Concentration	1mg/ml
Formulation	Rabbit IgG in 1XPBS, 10% Glycerol (pH7). 0.01% Thimerosal was added as a preservative.
Storage	Store at -20°C

Application Details

Western blotting: 1:500-1:3000

Images



Sample(30 µg of whole cell lysate)

A:293T

B:A431

C:H1299

10% SDS PAGE

#35368 diluted at 1:1500

Background

CD14 is a surface protein preferentially expressed on monocytes/macrophages. It binds lipopolysaccharide binding protein and recently has been

shown to bind apoptotic cells. Alternative splicing results in multiple transcript variants encoding the same isoform. [provided by RefSeq]

Note: This product is for in vitro research use only