

CD11a Antibody

Catalog No: #35375



Orders: [order@signalwayantibody.com](mailto:order@signalwayantibody.com)  
Support: [tech@signalwayantibody.com](mailto:tech@signalwayantibody.com)

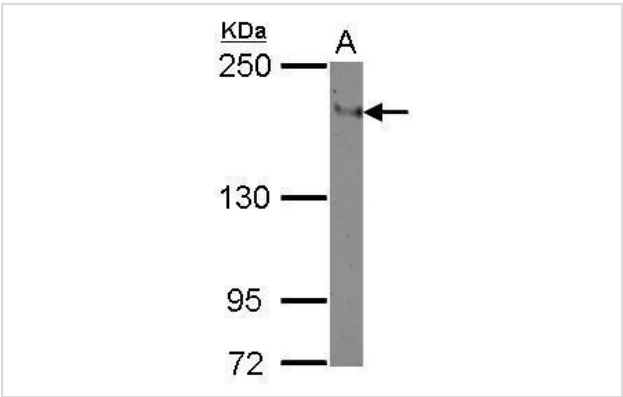
Description

Product Name	CD11a Antibody
Host Species	Rabbit
Clonality	Polyclonal
Purification	Antibodies were purified by antigen-affinity chromatography.
Applications	WB
Species Reactivity	Hu
Specificity	The antibody detects endogenous levels of total CD11a protein.
Immunogen Type	Recombinant Protein
Immunogen Description	Recombinant fragment corresponding to a region within amino acids 206 and 439 of CD11a.
Target Name	CD11a
Other Names	CD11A antibody; LFA-1 antibody; LFA1A antibody; ITGAL antibody; CD11 antigen-like family member A antibody; integrin gene promoter antibody; integrin alpha-L antibody; leukocyte function-associated molecule 1 alpha chain antibody; lymphocyte function-asso
Accession No.	Swiss-Prot#:P20701;NCBI Gene#:3683
Uniprot	P20701
GeneID	3683;
SDS-PAGE MW	129kd
Concentration	1mg/ml
Formulation	Rabbit IgG in 0.1M Tris, 0.1M Glycine, 10% Glycerol (pH7). 0.01% Thimerosal was added as a preservative.
Storage	Store at -20°C

Application Details

Western blotting: 1:500-1:3000

Images



Sample (30 ug of whole cell lysate)  
A: THP-1  
5% SDS PAGE  
#35375 diluted at 1:500

## Background

---

ITGAL encodes the integrin alpha L chain. Integrins are heterodimeric integral membrane proteins composed of an alpha chain and a beta chain. This I-domain containing alpha integrin combines with the beta 2 chain (ITGB2) to form the integrin lymphocyte function-associated antigen-1 (LFA-1), which is expressed on all leukocytes. LFA-1 plays a central role in leukocyte intercellular adhesion through interactions with its ligands, ICAMs 1-3 (intercellular adhesion molecules 1 through 3), and also functions in lymphocyte costimulatory signaling. Two transcript variants encoding different isoforms have been found for this gene. [provided by RefSeq]

---

Note: This product is for in vitro research use only