

alpha Actin (cardiac muscle) Antibody

Catalog No: #35382



Orders: [order@signalwayantibody.com](mailto:order@signalwayantibody.com)  
Support: [tech@signalwayantibody.com](mailto:tech@signalwayantibody.com)

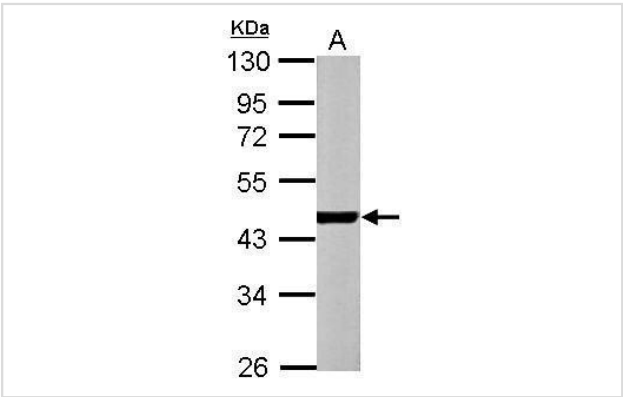
Description

|                       |   |
|-----------------------|---|
| Product Name          | alpha Actin (cardiac muscle) Antibody   |
| Host Species          | Rabbit  |
| Clonality             | Polyclonal  |
| Purification          | Antibodies were purified by antigen-affinity chromatography.  |
| Applications          | WB  |
| Species Reactivity    | Ms  |
| Specificity           | The antibody detects endogenous levels of total alpha Actin (cardiac muscle) protein.   |
| Immunogen Type        | Recombinant Protein   |
| Immunogen Description | Recombinant fragment contain a sequence corresponding to a region within amino acids 106 and 358 of alpha Actin .   |
| Target Name           | alpha Actin (cardiac muscle)  |
| Other Names           | actin; alpha cardiac muscle 1 antibody; actin alpha cardiac antibody; alpha-cardiac actin antibody; alphac-actin antibody; Actc-1 antibody; Actc1 antibody; "actin; alpha; cardiac muscle 1 antibody" |
| Accession No.         | Swiss-Prot#:P68033;NCBI Gene#:11464   |
| Uniprot               | P68033  |
| GeneID                | 11464;  |
| SDS-PAGE MW           | 42kd  |
| Concentration         | 0.25mg/ml   |
| Formulation           | Rabbit IgG in 0.1M Tris, 0.1M Glycine, 10% Glycerol (pH7). 0.01% Thimerosal was added as a preservative.  |
| Storage               | Store at -20°C  |

Application Details

Western blotting: 1:500-1:3000

Images



Sample (30 ug of whole cell lysate)  
A: NIH-3T3  
10% SDS PAGE  
#35382 diluted at 1:1000

## Background

---

Actins are highly conserved proteins that are involved in various types of cell motility and are ubiquitously expressed in all eukaryotic cells.

---

Note: This product is for in vitro research use only