

CLTA Antibody

Catalog No: #35385

Orders: order@signalwayantibody.com

Support: tech@signalwayantibody.com

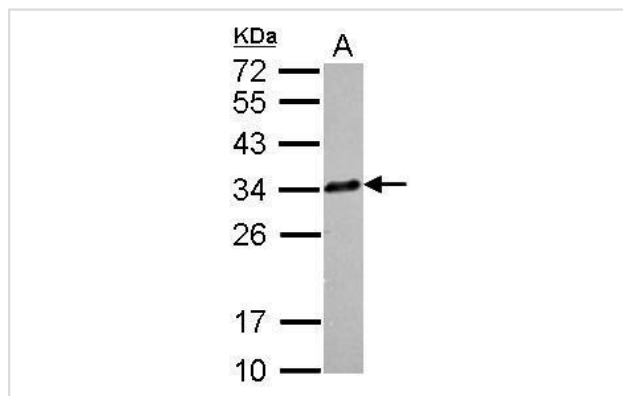
Description

Product Name	CLTA Antibody
Host Species	Rabbit
Clonality	Polyclonal
Purification	Antibodies were purified by antigen-affinity chromatography.
Applications	WB
Species Reactivity	Hu
Specificity	The antibody detects endogenous levels of total CLTA protein.
Immunogen Type	Recombinant Protein
Immunogen Description	Recombinant fragment contain a sequence corresponding to a region within amino acids 24 and 202 of CLTA.
Target Name	CLTA
Other Names	LCA antibody; CLTA antibody; clathrin light chain A antibody; "clathrin; light polypeptide (Lca) antibody"; "clathrin; light chain A antibody"
Accession No.	Swiss-Prot#:P09496;NCBI Gene#:1211
Uniprot	P09496
GeneID	1211;
SDS-PAGE MW	27kd
Concentration	1mg/ml
Formulation	Rabbit IgG in 1XPBS, 1%BSA, 20% Glycerol (pH7). 0.01% Thimerosal was added as a preservative.
Storage	Store at -20°C

Application Details

Western blotting: 1:500-1:3000

Images



Sample (30 ug of whole cell lysate)

A: A549

12% SDS PAGE

#35385 diluted at 1:1000

Background

Clathrin is a large, soluble protein composed of heavy and light chains. It functions as the main structural component of the lattice-type cytoplasmic

face of coated pits and vesicles which entrap specific macromolecules during receptor-mediated endocytosis. This gene encodes one of two clathrin light chain proteins which are believed to function as regulatory elements. Alternative splicing results in multiple transcript variants. [provided by RefSeq]

Note: This product is for in vitro research use only