

ACAT1 Antibody

Catalog No: #35395



Orders: order@signalwayantibody.com
Support: tech@signalwayantibody.com

Description

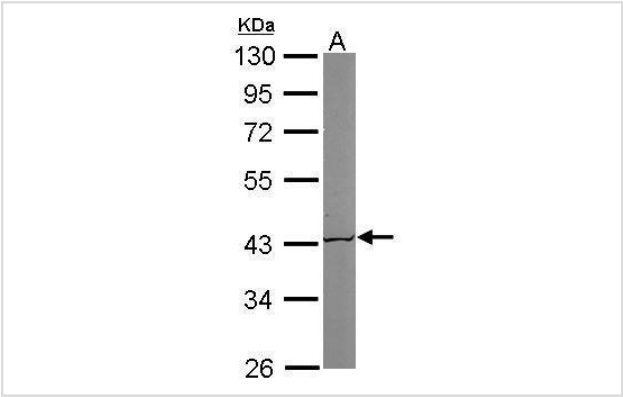
Product Name	ACAT1 Antibody
Host Species	Rabbit
Clonality	Polyclonal
Purification	Antibodies were purified by antigen-affinity chromatography.
Applications	IF WB
Species Reactivity	Hu Ms
Specificity	The antibody detects endogenous levels of total ACAT1 protein.
Immunogen Type	Recombinant Protein
Immunogen Description	Recombinant fragment corresponding to a region within amino acids 1 and 151 of ACAT1.
Target Name	ACAT1
Other Names	ACAT antibody; MAT antibody; T2 antibody; THIL antibody; ACAT1 antibody; mitochondrial acetoacetyl-CoA thiolase antibody; acetoacetyl-CoA thiolase antibody; acetyl-Coenzyme A acetyltransferase 1 antibody; "acetyl-CoA acetyltransferase; mitochondrial antib
Accession No.	Swiss-Prot#:P24752;NCBI Gene#:38
Uniprot	P24752
GeneID	38;
SDS-PAGE MW	45kd
Concentration	1mg/ml
Formulation	Rabbit IgG in 0.1M Tris, 0.1M Glycine, 10% Glycerol (pH7). 0.01% Thimerosal was added as a preservative.
Storage	Store at -20°C

Application Details

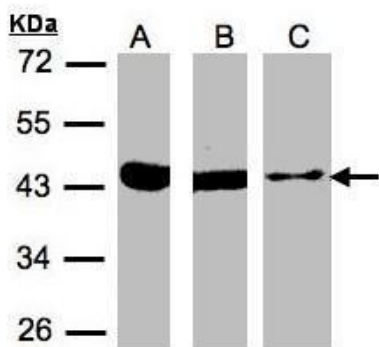
Western blotting: 1:500-1:3000

Immunofluorescence: 1:100-1:1000

Images



Sample (50 ug of whole cell lysate)
A: Mouse brain
10% SDS PAGE
#35395 diluted at 1:1000



Sample(30 µg of whole cell lysate)

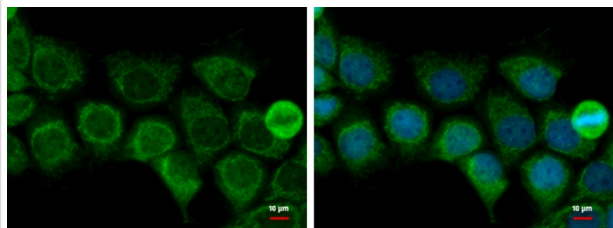
A:293T

B:A431

C:MOLT4

10% SDS PAGE

#35395 diluted at 1:500



ACAT1 antibody detects ACAT1 protein at mitochondria by immunofluorescent analysis. Sample: A431 cells were fixed in 2% paraformaldehyde/culture medium at 37°C for 30 min. Green: ACAT1 protein stained by ACAT1 antibody (#35395) diluted at 1:500. Blue: Hoechst 33342 staining.

Background

This gene encodes a mitochondrially localized enzyme that catalyzes the reversible formation of acetoacetyl-CoA from two molecules of acetyl-CoA. Defects in this gene are associated with 3-ketothiolase deficiency, an inborn error of isoleucine catabolism characterized by urinary excretion of 2-methyl-3-hydroxybutyric acid, 2-methylacetoacetic acid, tiglylglycine, and butanone. [provided by RefSeq]

Note: This product is for in vitro research use only