

ET-2 Antibody

Catalog No: #35400



Orders: order@signalwayantibody.com
Support: tech@signalwayantibody.com

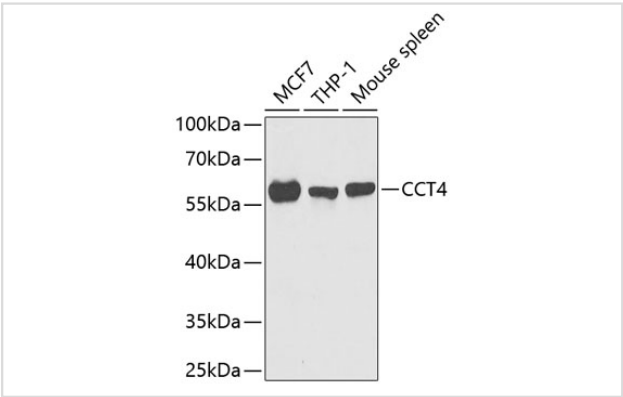
Description

Product Name	ET-2 Antibody
Host Species	Rabbit
Clonality	Polyclonal
Isotype	IgG
Purification	Affinity purification
Applications	WB,IF
Species Reactivity	Human,Mouse,Rat
Specificity	The antibody detects endogenous levels of total ET-2 protein.
Immunogen Type	Recombinant Protein
Immunogen Description	Recombinant fusion protein of human CCT4 (NP_006421.2).
Target Name	ET-2
Other Names	CCT4;CCT-DELTA;Cctd;SRB
Accession No.	Uniprot:P50991GenelD:10575
Uniprot	P50991
GenelD	10575
SDS-PAGE MW	60kDa
Concentration	1mg/ml
Formulation	PBS with 0.02% sodium azide,50% glycerol,pH7.3.
Storage	Store at -20°C. Avoid freeze / thaw cycles.

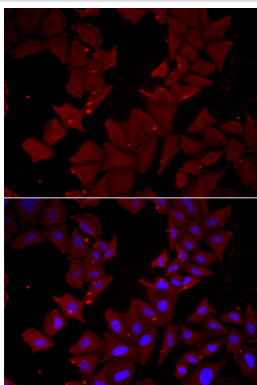
Application Details

WB 1:500 - 1:2000IF 1:50 - 1:200

Images



Western blot analysis of extracts of various cell lines, using CCT4 antibody.



Immunofluorescence analysis of HeLa cells using CCT4 antibody.

Background

The chaperonin containing TCP1 (MIM 186980) complex (CCT), also called the TCP1 ring complex, consists of 2 back-to-back rings, each containing 8 unique but homologous subunits, such as CCT4. CCT assists the folding of newly translated polypeptide substrates through multiple rounds of ATP-driven release and rebinding of partially folded intermediate forms. Substrates of CCT include the cytoskeletal proteins actin (see MIM 102560) and tubulin (see MIM 191130), as well as alpha-transducin (MIM 139330) (Won et al., 1998 [PubMed 9819444]).[supplied by OMIM, Mar 2008]

Note: This product is for in vitro research use only