

BLMH Antibody

Catalog No: #35402

Orders: order@signalwayantibody.comSupport: tech@signalwayantibody.com

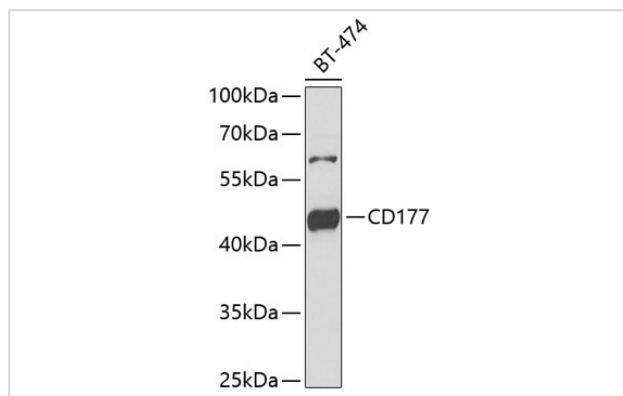
Description

Product Name	BLMH Antibody
Host Species	Rabbit
Clonality	Polyclonal
Purification	Antibodies were purified by antigen-affinity chromatography.
Applications	WB
Species Reactivity	Human,Mouse
Specificity	The antibody detects endogenous levels of total BLMH protein.
Immunogen Type	Recombinant Protein
Immunogen Description	Recombinant fragment corresponding to a region within amino acids 60 and 268 of BLMH.
Target Name	BLMH
Other Names	BH antibody; BMH antibody; BLMH antibody; bleomycin hydrolase antibody; BLM hydrolase antibody
Accession No.	Swiss-Prot#:Q13867;NCBI Gene#:642
Uniprot	Q13867
GeneID	642;
SDS-PAGE MW	53kd
Concentration	0.87mg/ml
Formulation	Rabbit IgG in 0.1M Tris, 0.1M Glycine, 20% Glycerol (pH7). 0.01% Thimerosal was added as a preservative.
Storage	Store at -20°C

Application Details

WB □ 1:500 - 1:2000

Images



Western blot analysis of extracts of BT-474 cells, using CD177 at 1:1000 dilution.

Background

Bleomycin hydrolase (BMH) is a cytoplasmic cysteine peptidase that is highly conserved through evolution; however, the only known activity of the enzyme is metabolic inactivation of the glycopeptide bleomycin (BLM), an essential component of combination chemotherapy regimens for cancer.

The protein contains the signature active site residues of the cysteine protease papain superfamily. [provided by RefSeq]

Note: This product is for in vitro research use only