

Creatine kinase (muscle) Antibody

Catalog No: #35413

Orders: order@signalwayantibody.com

Support: tech@signalwayantibody.com

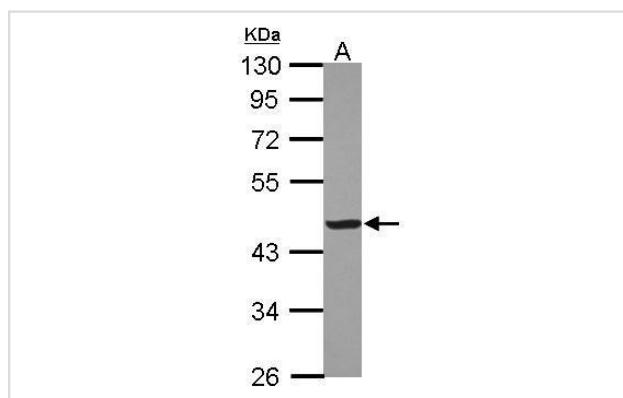
Description

Product Name	Creatine kinase (muscle) Antibody
Host Species	Rabbit
Clonality	Polyclonal
Purification	Antibodies were purified by antigen-affinity chromatography.
Applications	WB
Species Reactivity	Hu
Specificity	The antibody detects endogenous levels of total Creatine kinase (muscle) protein.
Immunogen Type	Recombinant Protein
Immunogen Description	Recombinant fragment corresponding to a region within amino acids 1 and 368 of Creatine kinase .
Target Name	Creatine kinase (muscle)
Other Names	CKMM antibody; M-CK antibody; CKM antibody; creatine kinase M chain antibody; creatine kinase-M antibody; creatine kinase M-type antibody; "creatine kinase; muscle antibody"
Accession No.	Swiss-Prot#:P06732;NCBI Gene#:1158
Uniprot	P06732
GeneID	1158;
SDS-PAGE MW	43kd
Concentration	0.71mg/ml
Formulation	Rabbit IgG in 1XPBS, 1%BSA, 20% Glycerol (pH7). 0.01% Thimerosal was added as a preservative.
Storage	Store at -20°C

Application Details

Western blotting: 1:500-1:3000

Images



Sample (30 ug of whole cell lysate)

A: HeLa

10% SDS PAGE

#35413 diluted at 1:1000

Background

The protein encoded by this gene is a cytoplasmic enzyme involved in energy homeostasis and is an important serum marker for myocardial infarction.

The encoded protein reversibly catalyzes the transfer of phosphate between ATP and various phosphogens such as creatine phosphate. It acts as a homodimer in striated muscle as well as in other tissues, and as a heterodimer with a similar brain isozyme in heart. The encoded protein is a member of the ATP:guanido phosphotransferase protein family. [provided by RefSeq]

Note: This product is for in vitro research use only