

# USP16 Antibody

Catalog No: #35418



Orders: [order@signalwayantibody.com](mailto:order@signalwayantibody.com)  
Support: [tech@signalwayantibody.com](mailto:tech@signalwayantibody.com)

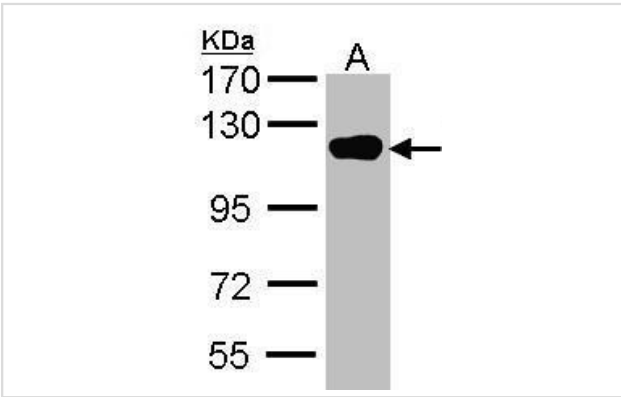
## Description

Product Name	USP16 Antibody
Host Species	Rabbit
Clonality	Polyclonal
Purification	Antibodies were purified by antigen-affinity chromatography.
Applications	WB
Species Reactivity	Hu
Specificity	The antibody detects endogenous levels of total USP16 protein.
Immunogen Type	Peptide
Immunogen Description	Synthetic peptide corresponding to a region within amino acids 1 and 45 of USP16.
Target Name	USP16
Other Names	UBP-M antibody; USP16 antibody; ubiquitin thiolesterase 16 antibody; ubiquitin-specific processing protease 16 antibody; deubiquitinating enzyme 16 antibody; ubiquitin specific protease 16 antibody; ubiquitin thiolesterase 16 antibody; ubiquitin-processing
Accession No.	Swiss-Prot#:Q9Y5T5;NCBI Gene#:10600
Uniprot	Q9Y5T5
GeneID	10600;
SDS-PAGE MW	94kd
Concentration	1mg/ml
Formulation	Rabbit IgG in 1XPBS, 40% Glycerol (pH7). 0.01% Thimerosal was added as a preservative.
Storage	Store at -20°C

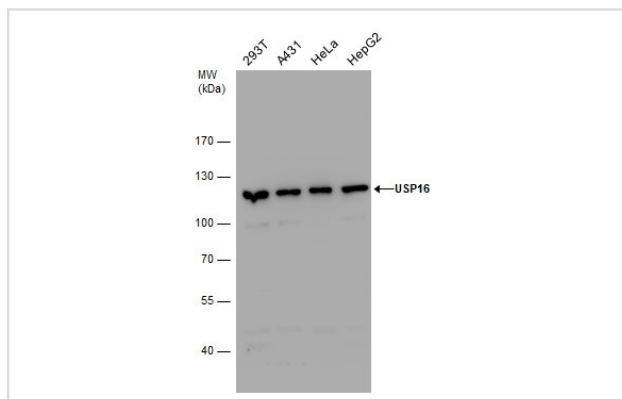
## Application Details

Western blotting: 1:500-1:3000

## Images



Sample (30 ug of whole cell lysate)  
A: Hep G2  
7.5% SDS PAGE  
#35418 diluted at 1:1000



Sample (30 ug of whole cell lysate)  
7.5% SDS PAGE  
#35418 diluted at 1:1000

## Background

This gene encodes a deubiquitinating enzyme that is phosphorylated at the onset of mitosis and then dephosphorylated at the metaphase/anaphase transition. It can deubiquitinate H2A, one of two major ubiquitinated proteins of chromatin, in vitro and a mutant form of the protein was shown to block cell division. Alternate transcriptional splice variants, encoding different isoforms, have been characterized. [provided by RefSeq]

Note: This product is for in vitro research use only