

CPEB1 Antibody

Catalog No: #35421



Orders: order@signalwayantibody.com
Support: tech@signalwayantibody.com

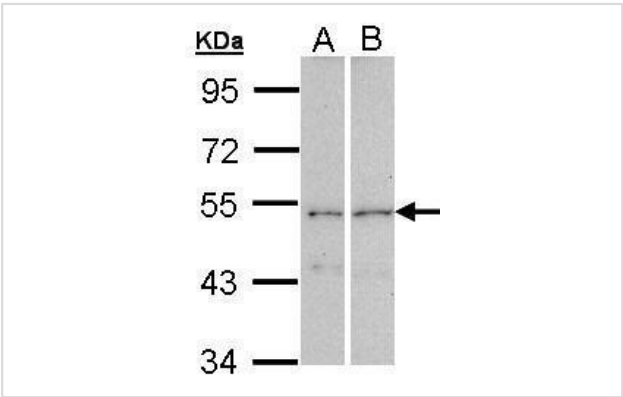
Description

| | |
|-----------------------|---|
| Product Name | CPEB1 Antibody |
| Host Species | Rabbit |
| Clonality | Polyclonal |
| Purification | Antibodies were purified by antigen-affinity chromatography. |
| Applications | WB |
| Species Reactivity | Hu |
| Specificity | The antibody detects endogenous levels of total CPEB1 protein. |
| Immunogen Type | Peptide |
| Immunogen Description | Synthetic peptide corresponding to a region within amino acids 505 and 566 of CPEB1. |
| Target Name | CPEB1 |
| Other Names | CEBP antibody; CPE-BP1 antibody; CPEB antibody; FLJ13203 antibody; MGC34136 antibody; MGC60106 antibody; CPEB1 antibody; cytoplasmic polyadenylation element-binding protein 1 antibody; h-CEBP antibody; CPE-binding protein 1 antibody; hCPEB-1 antibody; cyt |
| Accession No. | Swiss-Prot#:Q9BZB8;NCBI Gene#:64506 |
| Uniprot | Q9BZB8 |
| GeneID | 64506; |
| SDS-PAGE MW | 63kd |
| Concentration | 0.29mg/ml |
| Formulation | Rabbit IgG in 0.1M Tris, 0.1M Glycine, 10% Glycerol (pH7). 0.01% Thimerosal was added as a preservative. |
| Storage | Store at -20°C |

Application Details

Western blotting: 1:500-1:3000

Images



Sample (30 ug of whole cell lysate)
A: A431
B: Raji
7.5% SDS PAGE
#35421 diluted at 1:1000

Background

This gene encodes a member of the cytoplasmic polyadenylation element (CPE) binding protein family. This highly conserved protein binds to a specific RNA sequence called the CPE found in the 3' UTR of some mRNAs. Similar proteins in *Xenopus* and mouse function to induce cytoplasmic polyadenylation of dormant mRNAs with short polyA tails, resulting in their translation. Members of this protein family regulate translation of cyclin B1 during embryonic cell divisions. Multiple transcript variants encoding different isoforms have been found for this gene. [provided by RefSeq]

Note: This product is for in vitro research use only