

Bestrophin 1 Antibody

Catalog No: #35426

Orders: order@signalwayantibody.com

Support: tech@signalwayantibody.com

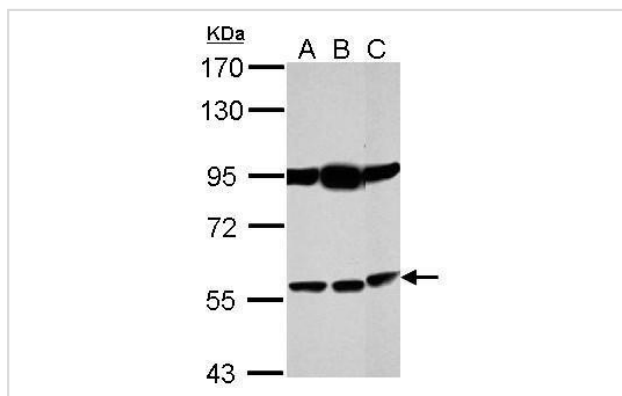
Description

Product Name	Bestrophin 1 Antibody
Host Species	Rabbit
Clonality	Polyclonal
Purification	Antibodies were purified by antigen-affinity chromatography.
Applications	WB
Species Reactivity	Hu
Specificity	The antibody detects endogenous levels of total Bestrophin 1 protein.
Immunogen Type	Recombinant Protein
Immunogen Description	Recombinant fragment corresponding to a region within amino acids 194 and 564 of Bestrophin 1.
Target Name	Bestrophin 1
Other Names	ARB antibody; BEST antibody; BMD antibody; RP50 antibody; TU15B antibody; VMD2 antibody; BEST1 antibody; vitelliform macular dystrophy protein 2 antibody; Best disease antibody; bestrophin-1 antibody; bestrophin 1 antibody
Accession No.	Swiss-Prot#:O76090;NCBI Gene#:7439
Uniprot	O76090
GeneID	7439;
SDS-PAGE MW	68kd
Concentration	1mg/ml
Formulation	Rabbit IgG in 1XPBS, 1%BSA, 20% Glycerol (pH7). 0.01% Thimerosal was added as a preservative.
Storage	Store at -20°C

Application Details

Western blotting: 1:500-1:3000

Images



Sample (30 ug of whole cell lysate)

A: NT2D1

B: PC-3

C: SK-N-SH

7.5% SDS PAGE

#35426 diluted at 1:1000

Background

This gene encodes a member of the bestrophin gene family. This small gene family is characterized by proteins with a highly conserved N-terminus with four to six transmembrane domains. Bestrophins may form chloride ion channels or may regulate voltage-gated L-type calcium-ion channels. Bestrophins are generally believed to form calcium-activated chloride-ion channels in epithelial cells but they have also been shown to be highly permeable to bicarbonate ion transport in retinal tissue. Mutations in this gene are responsible for juvenile-onset vitelliform macular dystrophy (VMD2), also known as Best macular dystrophy, in addition to adult-onset vitelliform macular dystrophy (AVMD) and other retinopathies. Alternative splicing results in multiple variants encoding distinct isoforms.

Note: This product is for in vitro research use only