

GEF-H1 Antibody

Catalog No: #35429

Orders: order@signalwayantibody.com

Support: tech@signalwayantibody.com

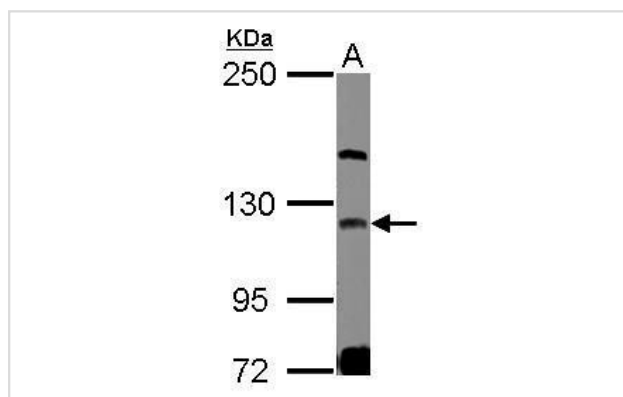
Description

Product Name	GEF-H1 Antibody
Host Species	Rabbit
Clonality	Polyclonal
Purification	Antibodies were purified by antigen-affinity chromatography.
Applications	WB
Species Reactivity	Hu
Specificity	The antibody detects endogenous levels of total GEF-H1 protein.
Immunogen Type	Recombinant Protein
Immunogen Description	Recombinant protein fragment contain a sequence corresponding to a region within amino acids 115 and 302 of GEF-H1.
Target Name	GEF-H1
Other Names	DKFZp547L106 antibody; DKFZp547P1516 antibody; FLJ45440 antibody; GEF antibody; GEF-H1 antibody; GEFH1 antibody; KIAA0651 antibody; LFP40 antibody; P40 antibody; ARHGEF2 antibody; microtubule-regulated Rho-GEF antibody; Rho/Rac guanine nucleotide exchange
Accession No.	Swiss-Prot#:Q92974;NCBI Gene#:9181
Uniprot	Q92974
GeneID	9181;
SDS-PAGE MW	112kd
Concentration	0.49mg/ml
Formulation	Rabbit IgG in 0.1M Tris, 0.1M Glycine, 10% Glycerol (pH7). 0.01% Thimerosal was added as a preservative.
Storage	Store at -20°C

Application Details

Western blotting: 1:500-1:3000

Images



Sample (30 ug of whole cell lysate)

A: K562

5% SDS PAGE

#35429 diluted at 1:1000

Background

Rho GTPases play a fundamental role in numerous cellular processes that are initiated by extracellular stimuli that work through G protein coupled receptors. The encoded protein may form complex with G proteins and stimulate rho-dependent signals. [provided by RefSeq]

Note: This product is for in vitro research use only