

beta 2 Adrenergic Receptor Antibody

Catalog No: #35438

Orders: order@signalwayantibody.comSupport: tech@signalwayantibody.com

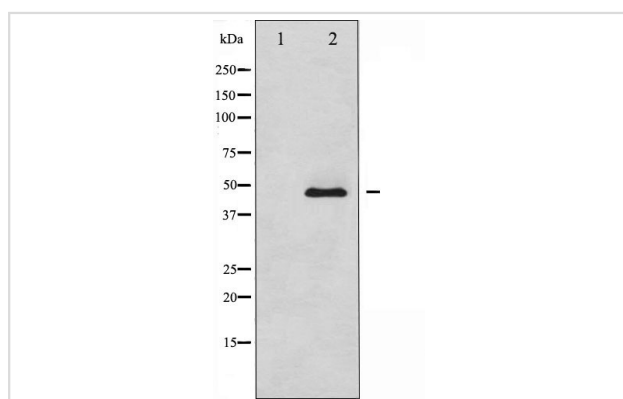
Description

Product Name	beta 2 Adrenergic Receptor Antibody
Host Species	Rabbit
Clonality	Polyclonal
Purification	Antibodies were purified by antigen-affinity chromatography.
Applications	WB
Species Reactivity	Hu
Specificity	The antibody detects endogenous levels of total beta 2 Adrenergic Receptor protein.
Immunogen Type	Recombinant Protein
Immunogen Description	A synthesized peptide derived from human beta 2 Adrenergic Receptor
Target Name	beta 2 Adrenergic Receptor
Other Names	ADRB2R antibody; ADRBR antibody; B2AR antibody; BAR antibody; BETA2AR antibody; ADRB2 antibody; catecholamine receptor antibody; beta-2 adrenoceptor antibody; beta-2 adrenoreceptor antibody; beta-2 adrenergic receptor antibody; "adrenergic; beta-2-; recep
Accession No.	Swiss-Prot#:P07550;NCBI Gene#:154
Uniprot	P07550
GeneID	154;
SDS-PAGE MW	46kd
Concentration	1mg/ml
Formulation	Rabbit IgG in phosphate buffered saline , pH 7.4, 150mM NaCl, 0.02% sodium azide and 50% glycerol.
Storage	Store at -20°C

Application Details

Western blotting: 1:500-1:2000

Images



Western blot analysis of Adrenergic Receptor beta2 expression in NIH-3T3 whole cell lysates, The lane on the left is treated with the antigen-specific peptide.

Background

This gene encodes beta-2-adrenergic receptor which is a member of the G protein-coupled receptor superfamily. This receptor is directly associated with one of its ultimate effectors, the class C L-type calcium channel Ca(V)1.2. This receptor-channel complex also contains a G protein, an adenylyl cyclase, cAMP-dependent kinase, and the counterbalancing phosphatase, PP2A. The assembly of the signaling complex provides a mechanism that ensures specific and rapid signaling by this G protein-coupled receptor. This gene is intronless. Different polymorphic forms, point mutations, and/or downregulation of this gene are associated with nocturnal asthma, obesity and type 2 diabetes. [provided by RefSeq]

Note: This product is for in vitro research use only