

PLK1 Antibody

Catalog No: #35448

Orders: order@signalwayantibody.comSupport: tech@signalwayantibody.com

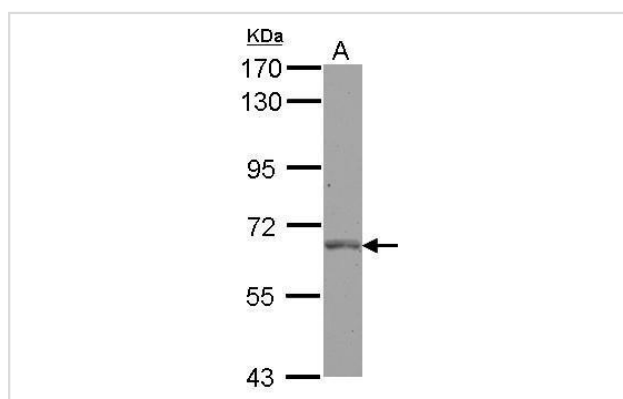
Description

Product Name	PLK1 Antibody
Host Species	Rabbit
Clonality	Polyclonal
Purification	Antibodies were purified by antigen-affinity chromatography.
Applications	WB
Species Reactivity	Hu
Specificity	The antibody detects endogenous levels of total PLK1 protein.
Immunogen Type	Recombinant Protein
Immunogen Description	Recombinant fragment corresponding to a region within amino acids 267 and 603 of PLK1.
Target Name	PLK1
Other Names	PLK antibody; STPK13 antibody; PLK1 antibody; serine/threonine-protein kinase 13 antibody; polo (Drosophia)-like kinase antibody; polo like kinase antibody; cell cycle regulated protein kinase antibody; serine/threonine-protein kinase PLK1 antibody; PLK-1
Accession No.	Swiss-Prot#:P53350;NCBI Gene#:5347
Uniprot	P53350
GeneID	5347;
SDS-PAGE MW	68kd
Concentration	1mg/ml
Formulation	Rabbit IgG in 1XPBS, 1%BSA, 20% Glycerol (pH7). 0.01% Thimerosal was added as a preservative.
Storage	Store at -20°C

Application Details

Western blotting: 1:500-1:3000

Images



Sample (30 ug of whole cell lysate)
A: HeLa
7.5% SDS PAGE
#35448 diluted at 1:1000

Background

Serine/threonine-protein kinase that performs several important functions throughout M phase of the cell cycle, including the regulation of centrosome maturation and spindle assembly, the removal of cohesins from chromosome arms, the inactivation of APC/C inhibitors, and the regulation of mitotic exit and cytokinesis. Required for recovery after DNA damage checkpoint and entry into mitosis. Required for kinetochore localization of BUB1B. Phosphorylates SGOL1. Required for spindle pole localization of isoform 3 of SGOL1 and plays a role in regulating its centriole cohesion function. Phosphorylates BORA, and thereby promotes the degradation of BORA. Contributes to the regulation of AURKA function. Regulates TP53 stability through phosphorylation of TOPORS.

Note: This product is for in vitro research use only