

PDGF Receptor alpha Antibody

Catalog No: #35451



Orders: order@signalwayantibody.com
Support: tech@signalwayantibody.com

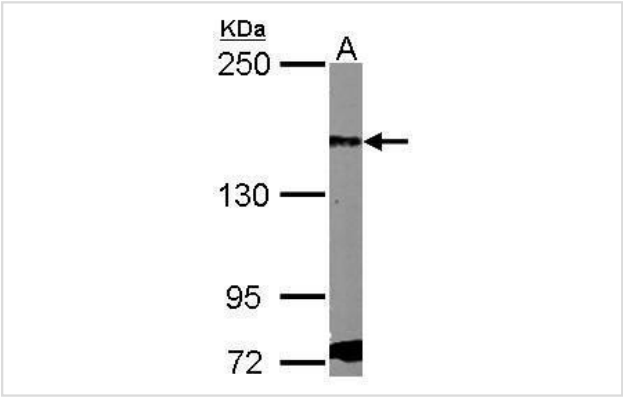
Description

Product Name	PDGF Receptor alpha Antibody
Host Species	Rabbit
Clonality	Polyclonal
Purification	Antibodies were purified by antigen-affinity chromatography.
Applications	WB
Species Reactivity	Hu Ms
Specificity	The antibody detects endogenous levels of total PDGF Receptor alpha protein.
Immunogen Type	Recombinant Protein
Immunogen Description	Recombinant fragment contain a sequence corresponding to a region within amino acids 331 and 709 of PDGF Receptor alpha.
Target Name	PDGF Receptor alpha
Other Names	CD140A antibody; MGC74795 antibody; PDGFR2 antibody; RHEPDGFRA antibody; PDGFRA antibody; CD140 antigen-like family member A antibody; CD140a antigen antibody; PDGF-R-alpha antibody; rearranged-in-hypereosinophilia-platelet derived growth factor receptor
Accession No.	Swiss-Prot#:P16234;NCBI Gene#:5156
Uniprot	P16234
GeneID	5156;
SDS-PAGE MW	123kd
Concentration	0.79mg/ml
Formulation	Rabbit IgG in 0.1M Tris, 0.1M Glycine, 10% Glycerol (pH7). 0.01% Thimerosal was added as a preservative.
Storage	Store at -20°C

Application Details

Western blotting: 1:500-1:3000

Images



Sample (30 ug of whole cell lysate)
A: K562
5% SDS PAGE
#35451 diluted at 1:1000

Background

This gene encodes a cell surface tyrosine kinase receptor for members of the platelet-derived growth factor family. These growth factors are mitogens for cells of mesenchymal origin. The identity of the growth factor bound to a receptor monomer determines whether the functional receptor is a homodimer or a heterodimer, composed of both platelet-derived growth factor receptor alpha and beta polypeptides. Studies in knockout mice, where homozygosity is lethal, indicate that the alpha form of the platelet-derived growth factor receptor is particularly important for kidney development since mice heterozygous for the receptor exhibit defective kidney phenotypes. [provided by RefSeq]

Note: This product is for in vitro research use only