

CKII alpha Antibody

Catalog No: #35452

Orders: order@signalwayantibody.comSupport: tech@signalwayantibody.com

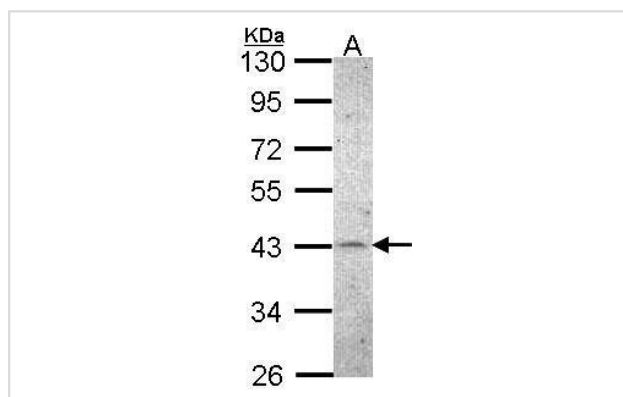
Description

Product Name	CKII alpha Antibody
Host Species	Rabbit
Clonality	Polyclonal
Purification	Antibodies were purified by antigen-affinity chromatography.
Applications	WB
Species Reactivity	Hu
Specificity	The antibody detects endogenous levels of total CKII alpha protein.
Immunogen Type	Recombinant Protein
Immunogen Description	Recombinant fragment contain a sequence corresponding to a region within amino acids 166 and 360 of Casein Kinase 2 alpha.
Target Name	CKII alpha
Other Names	CK2A1 antibody; CKII antibody; CSNK2A1 antibody; casein kinase II alpha 1 subunit antibody; CK II alpha antibody; protein kinase CK2 antibody; CK2 catalytic subunit alpha antibody; casein kinase II subunit alpha antibody; "casein kinase 2; alpha 1 polypep
Accession No.	Swiss-Prot#:P68400;NCBI Gene#:1457
Uniprot	P68400
GeneID	1457;
SDS-PAGE MW	45kd
Concentration	0.2mg/ml
Formulation	Rabbit IgG in 0.1M Tris, 0.1M Glycine, 10% Glycerol (pH7). 0.01% Thimerosal was added as a preservative.
Storage	Store at -20°C

Application Details

Western blotting: 1:500-1:3000

Images



Sample (30 ug of whole cell lysate)
A: Hep G2
10% SDS PAGE
#35452 diluted at 1:500

Background

Casein kinase II is a serine/threonine protein kinase that phosphorylates acidic proteins such as casein. The kinase exists as a tetramer and is composed of an alpha, an alpha-prime, and two beta subunits. The alpha subunits contain the catalytic activity while the beta subunits undergo autophosphorylation. The protein encoded by this gene represents the alpha subunit. While this gene is found on chromosome 20, a related transcribed pseudogene is found on chromosome 11. Three transcript variants encoding two different proteins have been found for this gene. [provided by RefSeq]

Note: This product is for in vitro research use only