

EDG1 Antibody

Catalog No: #35455



Orders: [order@signalwayantibody.com](mailto:order@signalwayantibody.com)  
Support: [tech@signalwayantibody.com](mailto:tech@signalwayantibody.com)

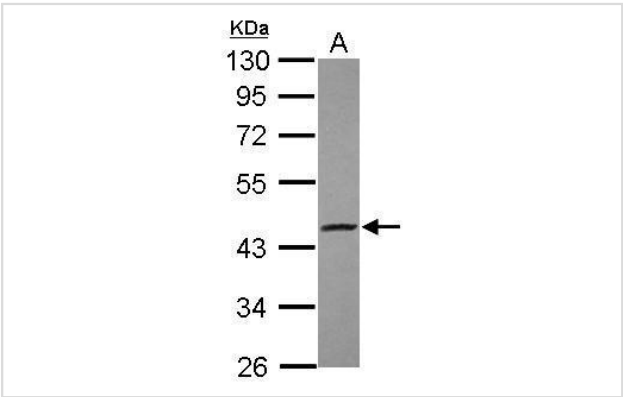
Description

Product Name	EDG1 Antibody
Host Species	Rabbit
Clonality	Polyclonal
Purification	Antibodies were purified by antigen-affinity chromatography.
Applications	WB
Species Reactivity	Hu
Specificity	The antibody detects endogenous levels of total EDG1 protein.
Immunogen Type	Peptide
Immunogen Description	Synthetic peptide corresponding to a region within amino acids 1 and 45 of EDG1.
Target Name	EDG1
Other Names	CHEDG1 antibody; D1S3362 antibody; ECGF1 antibody; EDG-1 antibody; EDG1 antibody; FLJ58121 antibody; S1P1 antibody; S1PR1 antibody; sphingosine 1-phosphate receptor Edg-1 antibody; "endothelial differentiation; sphingolipid G-protein-coupled receptor; 1 a
Accession No.	Swiss-Prot#:P21453;NCBI Gene#:1901
Uniprot	P21453
GeneID	1901;
SDS-PAGE MW	43kd
Concentration	0.66mg/ml
Formulation	Rabbit IgG in 0.1M Tris, 0.1M Glycine, 10% Glycerol (pH7). 0.01% Thimerosal was added as a preservative.
Storage	Store at -20°C

Application Details

Western blotting: 1:500-1:3000

Images



Sample (30 ug of whole cell lysate)  
A: HCT116  
10% SDS PAGE  
#35455 diluted at 1:500

## Background

---

The protein encoded by this gene is structurally similar to G protein-coupled receptors and is highly expressed in endothelial cells. It binds the ligand sphingosine-1-phosphate with high affinity and high specificity, and suggested to be involved in the processes that regulate the differentiation of endothelial cells. Activation of this receptor induces cell-cell adhesion. [provided by RefSeq]

---

Note: This product is for in vitro research use only