

Eps15 Antibody

Catalog No: #35458

Orders: order@signalwayantibody.comSupport: tech@signalwayantibody.com

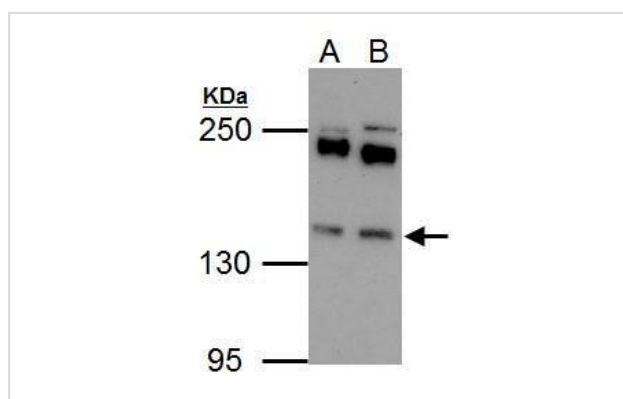
Description

Product Name	Eps15 Antibody
Host Species	Rabbit
Clonality	Polyclonal
Purification	Antibodies were purified by antigen-affinity chromatography.
Applications	WB
Species Reactivity	Hu Ms
Specificity	The antibody detects endogenous levels of total Eps15 protein.
Immunogen Type	Peptide
Immunogen Description	Synthetic peptide corresponding to a region within amino acids 832 and 896 of Eps15.
Target Name	Eps15
Other Names	AF-1P antibody; AF1P antibody; MLLT5 antibody; EPS15 antibody; ALL1 fused gene from chromosome 1 antibody; epidermal growth factor receptor substrate 15 antibody; protein AF-1p antibody; epidermal growth factor receptor pathway substrate 15 antibody
Accession No.	Swiss-Prot#:P42566;NCBI Gene#:2060
Uniprot	P42566
GeneID	2060;
SDS-PAGE MW	99kd
Concentration	0.83mg/ml
Formulation	Rabbit IgG in 0.1M Tris, 0.1M Glycine, 10% Glycerol (pH7). 0.01% Thimerosal was added as a preservative.
Storage	Store at -20°C

Application Details

Western blotting: 1:500-1:3000

Images



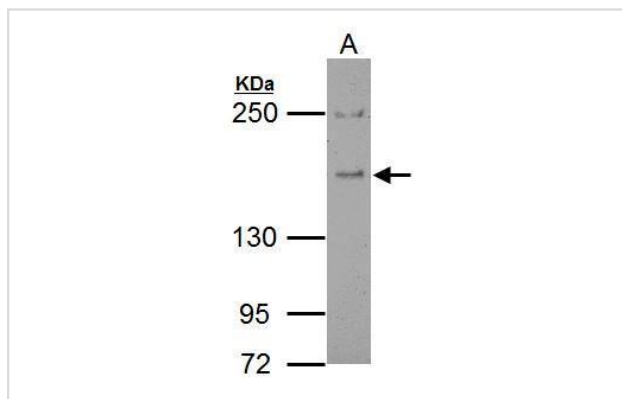
Sample (30 ug of whole cell lysate)

A: Raji

B: K562

5% SDS PAGE

#35458 diluted at 1:1000



Sample (30 ug of whole cell lysate)

A: BCL-1

5% SDS PAGE

#35458 diluted at 1:500

Background

This gene encodes a protein that is part of the EGFR pathway. The protein is present at clatherin-coated pits and is involved in receptor-mediated endocytosis of EGF. Notably, this gene is rearranged with the HRX/ALL/MLL gene in acute myelogenous leukemias. Alternate transcriptional splice variants of this gene have been observed but have not been thoroughly characterized. [provided by RefSeq]

Note: This product is for in vitro research use only