

## BMF Antibody

Catalog No: #35459

Orders: [order@signalwayantibody.com](mailto:order@signalwayantibody.com)Support: [tech@signalwayantibody.com](mailto:tech@signalwayantibody.com)

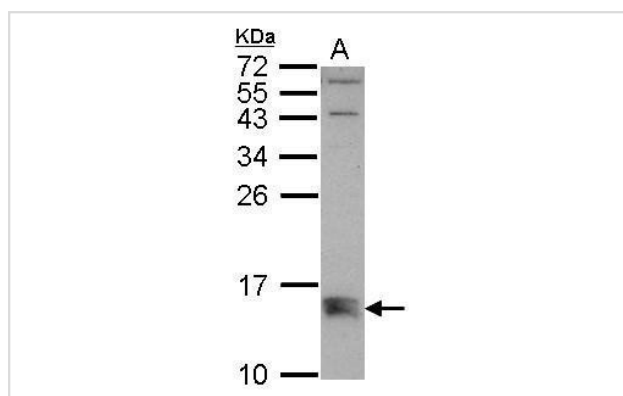
## Description

Product Name	BMF Antibody
Host Species	Rabbit
Clonality	Polyclonal
Purification	Antibodies were purified by antigen-affinity chromatography.
Applications	WB
Species Reactivity	Hu
Specificity	The antibody detects endogenous levels of total BMF protein.
Immunogen Type	Recombinant Protein
Immunogen Description	Recombinant fragment corresponding to a region within amino acids 1 and 184 of BMF.
Target Name	BMF
Other Names	FLJ00065 antibody; BMF antibody; bcl-2-modifying factor antibody; Bcl2 modifying factor antibody
Accession No.	Swiss-Prot#:Q96LC9;NCBI Gene#:90427
Uniprot	Q96LC9
GeneID	90427;
SDS-PAGE MW	21kd
Concentration	1mg/ml
Formulation	Rabbit IgG in 1XPBS, 1%BSA, 20% Glycerol (pH7). 0.01% Thimerosal was added as a preservative.
Storage	Store at -20°C

## Application Details

Western blotting: 1:500-1:3000

## Images



Sample (30 ug of whole cell lysate)  
A: K562  
15% SDS PAGE  
#35459 diluted at 1:500

## Background

The protein encoded by this gene belongs to the BCL2 protein family. BCL2 family members form hetero- or homodimers and act as anti- or pro-apoptotic regulators that are involved in a wide variety of cellular activities. This protein contains a single BCL2 homology domain 3 (BH3), and has

been shown to bind BCL2 proteins and function as an apoptotic activator. This protein is found to be sequestered to myosin V motors by its association with dynein light chain 2, which may be important for sensing intracellular damage and triggering apoptosis. Alternatively spliced transcript variants encoding different isoforms have been identified. [provided by RefSeq]

---

Note: This product is for in vitro research use only