

BLM Antibody

Catalog No: #35460

Orders: order@signalwayantibody.com

Support: tech@signalwayantibody.com

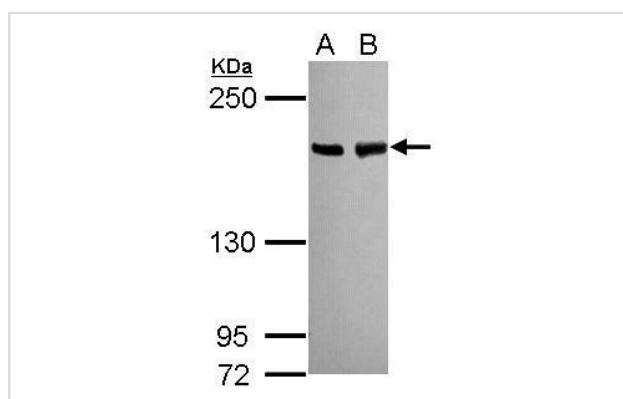
Description

Product Name	BLM Antibody
Host Species	Rabbit
Clonality	Polyclonal
Purification	Antibodies were purified by antigen-affinity chromatography.
Applications	WB
Species Reactivity	Hu
Specificity	The antibody detects endogenous levels of total BLM protein.
Immunogen Type	Recombinant Protein
Immunogen Description	Recombinant fragment corresponding to a region within amino acids 192 and 508 of BLM.
Target Name	BLM
Other Names	BS antibody; MGC126616 antibody; MGC131618 antibody; MGC131620 antibody; RECQ2 antibody; RECQL2 antibody; RECQL3 antibody; BLM antibody; "DNA helicase; RecQ-like type 2 antibody"; Bloom syndrome protein antibody; recQ protein-like 3 antibody; "Bloom syndr
Accession No.	Swiss-Prot#:P54132;NCBI Gene#:641
Uniprot	P54132
GeneID	641;
SDS-PAGE MW	159kd
Concentration	1mg/ml
Formulation	Rabbit IgG in 1XPBS, 1%BSA, 20% Glycerol (pH7). 0.01% Thimerosal was added as a preservative.
Storage	Store at -20°C

Application Details

Western blotting: 1:500-1:3000

Images



Sample (30 ug of whole cell lysate)
A: 293T
B : A431
5% SDS PAGE
#35460 diluted at 1:1000

Background

The Bloom syndrome gene product is related to the RecQ subset of DExH box-containing DNA helicases and has both DNA-stimulated ATPase and ATP-dependent DNA helicase activities. Mutations causing Bloom syndrome delete or alter helicase motifs and may disable the 3'-5' helicase activity. The normal protein may act to suppress inappropriate recombination. [provided by RefSeq]

Note: This product is for in vitro research use only